

CRISTINA ARCENEGUI BONO**SS001 - iPad for Quilters - Procreate**

6-Hour Workshop - \$85

12 pm - 6 pm EDT, Thursday, June 26

Whether you've already rocked my "iPad for Quilters" workshop or you're just itching to dive into the digital design world with Procreate, this online workshop is your next creative playground. Forget about needing mad drawing skills – Procreate's got your back. This workshop is all about taking your quilting game up a notch, sharpening your free motion skills, doodling like a pro, and designing patterns. Returning students, get ready to level up your quilting mojo with some advanced digital design tricks. Newbies, prepare to have your mind blown as you discover a whole new way to bring your quilting dreams to life with magic Procreate.

All Levels**Students to Provide**

- iPad
- iPad stylus
- The apps Procreate and Vector Q by Imaengine



CRISTINA ARCENEGUI BONO**SS002 - Artificial Intelligence for Quilters**

3-Hour Workshop - \$50

12 pm - 3 pm EDT, Friday, June 27

Join Cristina for this workshop designed specifically for quilters eager to merge creativity with technology! In this engaging three-hour session, you will learn to harness the power of Artificial Intelligence to elevate your quilting projects. Explore various AI tools for generating innovative designs, creating beautiful color palettes, and crafting stunning presentations. This interactive course is perfect for quilters of all skill levels, offering fresh ideas and hands-on activities. Don't miss the opportunity to transform your quilting journey.

All Levels**Students to Provide**

- PC or an iPad
- The following software: ChatGPT



CAROL W CLANTON**SS003 - Daisy Wreath-An Introduction to Applique**

3-Hour Workshop - \$65

12 pm - 3pm EDT, Wednesday, June 25

The workshop fee includes the \$10 Class Kit

You too can learn needleturn applique! Whether you are an expert quilter or a beginner, this is the class for you. You will learn and gain confidence in stitching smooth shapes around freezer paper templates. Carol will give you fun tips during class to put your own creativity into your stitching. All your supplies can easily be found in your sewing room, except maybe the freezer paper. **All sewing is done by hand.**

All Levels

Class Kit includes a pattern and worksheet that will be sent digitally. The \$10 class kit is included in the workshop fee. **Please note: Kits will only be mailed within the continental United States.**

BEFORE CLASS:

Cut 13" square out of background fabric. (Finished block will be 12 1/2"). Cut four bias strips 7/8" x 6" for the wreath.

HINT: You can start with a 9 1/2" square. Cut the square diagonally from corner to corner. From that diagonal cut, cut out a 7/8" wide strip. Continue to cut out three more strips from the square. You will have enough fabric left from the square to cut out the leaves if you like.

Students to Provide

Fabric: This is a good time to look in your stash. Choose 100% cotton fabric colors of your choice for the flowers and a variety of greens for the leaves. Background should be a light color (white shows off the applique).

Thread: 100% cotton 50 wt. thread to match your appliques, not your background fabric. If you cannot find the color in cotton you can also use polyester covered cotton. Aurifil has a 100% cotton 80 wt. thread that works well also.

Needles: A long slim needle works best for needleturn. Size 10 to 12 Sharps or Milliner needles work well.

Other Supplies: Freezer paper, fabric marker/pencil for tracing pattern and marking fabric, small paper scissors, embroidery scissors for fabric, 1/2" or 3/4" applique pins, toothpick, thimble if you use one, light box (optional), and any other sewing supplies that make you happy!

CAROL W CLANTON**SS004 - Introduction to Broderie Perse**

3-Hour Workshop - \$65

12 pm - 3 pm EDT, Thursday, June 26

The workshop fee includes the \$10 Class Kit

In this workshop, you have a choice of two projects. Create your design for a notebook cover or for a small pillow, pincushion or other project of your choice. There are no small individual pieces to applique down. Instead, groups of flowers, birds, butterflies and other motifs are cut out and sewn on to a background using a simple applique hand stitch. This is the perfect workshop to have fun with design using the Broderie Perse Applique technique while learning or practicing the needleturn applique stitch. **All Applique Done By Hand**
All Levels



Class Kit includes a Pattern and Worksheet to be sent digitally. The \$10 class kit is included in the workshop fee. **Please note: Kits will only be mailed within the continental United States.**

BEFORE CLASS-cut the following:

**For either project try to match your background to the fabric color of your motifs (Sometimes darker motif background will create interesting shadows to your design when stitched onto your ground fabric.)

For the 7" BLOCK: Cut a 7" square piece of 100% cotton fabric.

For the NOTEBOOK: Cut background 100% cotton fabric (notebook cover), and notebook lining fabric, each measuring 9"x 13", Notebook pockets measuring 5"x 9", Low Loft

Batting measuring 9"X13"

Two pieces of white paper (I use freezer paper) each measuring 5"X7" to use as a guide for placing your design onto your background.

Would you like to create another size notebook/book cover?

To make other size book/notebook covers: Measure the book/notebook adding 1" to the height and 2" to the distance around the book. You can make adjustments as needed. An additional 1" has been added to that formula to allow for shrinkage during hand stitching.

Students to Provide (supply list for both projects)

Fabric: 100% cotton fat quarter of your choice with motif sizes 2" to 3".

For hand applique: Sharp or Milliner needle size 10, 11, or 12. 100% cotton 50 wt or 80 wt thread to match your design, not your background.

Other Supplies:

Small fabric scissors, paper scissors, thimble, machine in good working order (for notebook construction or adding 7" block borders), iron and ironing surface standing by, good lighting, and anything else that makes you happy.

*For Machine sewing (for finishing up your project): needle with your favorite quilting wt of thread, (I use 50 wt 100% cotton for quilting as well as for notebook construction or for adding borders.)

Sewing Machine Optional

VICKIE CLONTZ**SS006 - Needle-Felt Alpaca**

Three-Hour Workshop - \$95

10 am - 1 pm EDT, Tuesday, June 24

The workshop fee includes the \$35 Class Kit

Students will needle-felt an adorable alpaca using wool fibers and a pre-felted wool base to save time and effort. This cute fellow is ready to hold your sewing needs including pins and small items you can tuck into his ribbon to keep handy, such as thread snips, tape measure, etc. This Alpaca Sewing Kit (get it? "I'll pack a sewing kit") is great for beginners and also more experienced filters. Ribbon trim may vary. Finished size is approximately 5".

All Levels

Class Kit includes all wool fibers, pre-felted fiber base for body, ribbon and fringe trims, 2 black bead eyes, pattern. The \$35 class kit is included in the workshop fee. **Please note: Kits will only be mailed within the continental United States.**

Students to Provide

- Single felting needle
- Optional: multi-needle felting tool (I recommend a 3-needle felting pen)
- Small 2" thick sturdy foam pad for needle-felting (about 7" square or larger)
- Black thread
- Small scissors or thread snips
- Pins
- Long thin needle



VICKIE CLONTZ**SS007 - Ice-Dyeing Spiral**

3-Hour Workshop - \$85

10 am - 1 pm EDT, Thursday, June 26

The workshop fee includes the \$22 class kit.

Have fun playing with color as we ice-dye a cotton shirt or fabric square you can use in a quilt or hang on the wall as an art piece to enhance your home! Ice-dyeing is so fun and easy, and the end result is always a delightful surprise. Choose from 1 of 3 colorways shown in the pictures, or I also have basic red, yellow and blue.

All Levels

Class Kit After registering for this class, please email Vickie with your colorway choice, annieskeepsakes@carolina.rr.com Choose kit colorway: green/orange/teal/yellow, fuchsia/orange, teal/purple. I also have basic red, yellow, blue, and black. Also included in kit: soda ash, synthrapol for washing, and directions. The \$22 class kit is included in the workshop fee. **Please note: Kits will only be mailed within the continental United States.**

Students to Provide

- 100% white cotton shirt or 25" square of fabric (at least 85% cotton) prewashed with no fabric softener
- Face mask
- Plastic container large enough to hold garment (bowl or shallow tray)
- Plastic container approximately 14" x 16" with lid or tray to go on top
- Non-rusting metal or plastic grate
- 4 small containers to elevate grate (see photo)
- Washable marker
- Cardboard or plastic strips 3" - 4" tall to hold ice in place
- A few clothespins
- Plastic placemat
- Plastic spoons for dyes
- Disposable rubber gloves
- Blue Dawn dish soap
- Ice (a lot!)
- If you have fiber-reactive dyes you may use them in addition to the ones in your kit
- Optional: seedling heat mat or electric blanket



ROSALIE DACE**SS008 - Looking In, Looking Out**

6-Hour Workshop - \$105

10 am - 4 pm EDT, Tuesday, June 24

Explore the exciting possibilities of windows and doors as you let the light into your work! Do what other artists have done over the centuries and use windows and doors to open your eyes to another view, whether real, imaginary or symbolic. Using the shapes and spaces they define, discover the vitality of positive and negative design and simple geometric forms as you create your own unique small work based on the openings and closings in buildings and structures around us. Choose to go in or out, letting air, light and meaning into your work as you take a whole new view of the possibilities in your quilt making!

All Levels**Students to Provide**

Small pieces of fabric in colors of your choice in hand-dyed and commercial fabrics, solid colors, subtle and/or strong textural prints, tone-on-tone prints. Make sure you have a good range of lights, mediums and darks. 100% cotton is advisable, although you may choose to bring some specialist fabrics, like silks and sheers or papers that might add subtle differences and enhance how color or shape is perceived in your window-based design.

PREPARATION:

This is the fun part even before the class! Look at windows everywhere and take pictures. Collect images and bring your variety and ideas to class. You may want to find words, poetry or writing that suggests new views and the symbolism of looking in and looking out. You do NOT have to come with a design all worked out but just bring lots of images and ideas



ROSALIE DACE**SS009 - Stitch and Smile**

6-Hour Workshop - \$105

10 am - 4 pm EDT, Friday, June 27

Explore the exciting possibilities of thread as you spend a relaxing day stitching lines, shapes, textures and colors by hand with the magic of thread. Learn the secrets of making a variety of stitches thick, thin, bold or fine to add richness and personality to your work.

All Levels**Students to Provide**

Two pieces of firm fabric approximately 14 x 14 in that you will stitch onto.

Fine sheer fabric to stitch onto (optional)

A variety of threads in colors of your choice that include different weights and thicknesses.

You may choose to include perle cotton in different thicknesses, stranded embroidery floss, metallic thread, cord, string, yarn and regular machine thread.

A variety of needles, small and large, to accommodate the various thicknesses of your thread.

Sharp embroidery scissors

Embroidery hoop (optional)

Fabric marking pen or pencil (optional)

PREPARATION: Thread is 3-dimensional line, pattern and texture so look everywhere at stitched surfaces, take photographs and find what excites you!



AUDREY ESAREY**SS026 - Pinpoint Quilt Workshop**

3-Hour Workshop - \$60

4 pm - 7 pm EDT, Thursday, June 26

The Pinpoint Quilt is made using curved piecing techniques. This workshop is for confident beginners who want to learn and/or optimize their experience sewing curves. The students will complete several quilt blocks during class. The cover Pinpoint Quilt finishes at 48 x 48 inches, but the quilt can be made larger (or smaller) by making a different number of blocks. Students should expect to make 1-2 blocks during class. Pattern sold separately - see below.

Confident Beginner Level

Workshop pattern is required, either digital or hard copy, to be purchased directly from Audrey Esarey, \$14 – 19. The discount code for registrants is MANCUSO20 for students to get 20% off the pattern good through June 27th. [Click here to purchase the pattern.](#)

Students to Provide

(Please [click here](#) to download the fabric and supply list for the Pinpoint Quilt Workshop.)

The block measures 10 x 10 inches (finished size). The fabric requirements below will create sixteen blocks.

Fabric Requirements:

| Quilt Template | Fabric Amount | Color Reference |
|------------------------|--|-------------------------------|
| Center Circle | 4 Fat Quarters | Various Dark Pinks & Reds |
| Ring / Pointed Ring | 8 Fat Quarters | Various Greys |
| Corner | 4 Fat Quarters | Various Yellows & Light Pinks |
| Quilt Border | 3/4 yard + 1/4 yard for additional Corner Templates | Quilter's Choice |
| Quilt Backing | 3 yards | Quilter's Choice |
| Quilt Binding / Facing | 1/2 yard | Quilter's Choice |
| Quilt Batting | 54 x 54 inch | N/A |

Pattern assumes yardage is 42" wide and seam allowance of 1/4 inch. Please note, these are fabric estimates.

I like to add visual interest in the color & value for my fabric selections, which often means cutting fewer pieces from a wider variety of fabrics. Sometimes I'll raid my remnant bin and cut just one template from various scraps.

Supplies:

- Pinpoint Quilt Pattern - Digital download available on www.CottonandBourbon.com
- Basic Sewing Supplies
- Iron
- Clear Tape
- Pattern Weights
- Rotary Cutter and Cutting Mat
- Marking Tool
- Printer Paper
- 6 x 24 inch Ruler
- Fine Glass Head Pins
- Cut Resistant Glove (we will be cutting without rulers or acrylic templates)
- Sewing Machine with 1/4 inch Foot
- Neutral Piecing Thread
- Optional: I will demonstrate using glue to secure the curved seams for piecing. If you'd like to try using glue instead of pins, you could gather one or both these glue options to try during class, however, neither is REQUIRED. I will also show piecing with pins.
 - This [glue tip applicator](#) can be used with Elmer's White Washable Glue Bottles
 - This [glue tip applicator](#) can be used with many washable glue sticks

Tip! For large paper templates, use large flat hardware like washers to weigh down the paper template for cutting. They are easy to work with and less expensive than traditional pattern weights. Check out my new [Pattern Weight Holder and Pattern Weight Station!](#)

Resources:

Precision Pinning, Curved Piecing, Quilt Facing, and Quilt Hanging Sleeve tutorials are available at www.cottonandbourbon.com/tutorials.

Prework:

Read the pattern. Print the pattern template pages (8 pages total - pages 13-20 in the digital pattern download) and complete the steps 1-3 on page 5 under section Template Printing Instructions & Pattern Preparation. We will begin the workshop by briefly discussing color selection. Give some thought to your desired color palette and pull those fabrics from your stash. Pressing fabrics will help you start sewing faster! Pre-cutting the fabric is NOT required or recommended.

Sewing Machine Required

AUDREY ESAREY**SS027 – Mobius Radial Quilt**

6-Hour Workshop - \$100

12 pm - 6 pm EDT, Friday, June 27

Mobius Radial is a wall hanging made using paper piecing, curved piecing, and partial seam techniques. This workshop covers the basic concepts of paper piecing on an arc, curved piecing, and precision piecing. We will also discuss quilting ideas. Students will learn the concepts of paper piecing on a curve. There will be a focus on curved piecing and partial seam construction. The students will complete a portion of the quilt during class. The Mobius Radial Quilt finishes at 30 x 30 inches. Pattern sold separately - see below.

Confident Beginner Level

Workshop pattern is required: [Click here to purchase the Modius Radial Quilt pattern.](#) The discount code for registrants is MANCUSO20 for students to get 20% off the pattern good through June 27th.

Students to Provide

(Please [click here](#) to download the fabric and supply requirements, the class prework and workshop templates.)

Class exercise templates are also provided to the students in the supply list, these need to be printed. Please see the prework listed in the supply list.

Fabric Requirements

| Quilt Template | Fabric Amount | Color Reference |
|--------------------------------------|---------------|-----------------|
| Outer Background & Center Background | 1 yard | Snow |
| Pieced Arc - Feature Fabric | 3/4 yard | Charcoal |
| Pieced Arc - Background Fabric | 3/4 yard | Snow |
| Quilt Backing | 1 1/8 yards | Snow |
| Quilt Binding / Facing | 3/8 yard | Snow |
| Quilt Batting | 38 x 38 inch | N/A |

Supplies:

- **Mobius Radial Quilt Pattern** - Digital download available on www.CottonandBourbon.com
- Sewing Machine with 1/4 inch Foot
- Basic Sewing Supplies
- Iron
- Add-a-Quarter Ruler
- Clear Tape
- Rotary Cutter and Cutting Mat
- 6 x 24 inch ruler
- Printer Paper for Templates
- Fine Glass Head Pins
- Neutral Piecing Thread
- Optional Supplies: Cut Resistant Glove and Large Washers for Pattern Weights

Resources:

Link for large washers I use: [Large Washers - Lowes](#)

If you want large washers and a convenient storage solution - you can snag a Pattern Weight Holder / Station from my website here: <https://www.cottonandbourbon.com/quilting-extras>

Link for cut resistant glove: [Cut Resistant Glove - Amazon F8&psc=1](#)

We'll be using the Swoop Quilt Block (see *image in the downloadable supply list*) to demonstrate and practice curved partial seams in class. Please see below for the fabric remnants needed for this test block. These can easily be selected from the scrap bin. An example block is pictured to the right. This block is made with two feature fabrics (wasabi and glacier) and background fabric (snow).

Swoop Quilt Block Fabric Requirements

| Quilt Template | Minimum Fabric Amount | Kona Color Reference |
|--------------------------------------|---------------------------|----------------------|
| Outer Background & Center Background | 17 x 17 inch remnant | Snow |
| Swoop 1 & 2 - Feature Fabrics | 2 - 12 x 13 inch remnants | Wasabi & Glacier |

Prework:

1. Select fabrics for the Mobius Radial quilt & Swoop Quilt Block class exercise
2. **In the Mobius Radial Pattern:** Complete steps in 1-4 on page 3 (section for *Template Printing Instructions & Pattern Preparation*).
 1. Printing templates in the larger paper size at Staples or Office Depot means you don't have to tape together those paper templates.
3. Print and tape together the Swoop Quilt Block paper templates using the same printing process described in the Mobius Radial pattern.
 1. The Swoop Quilt Block Templates are 10 pages and begin on the next page.
 2. Print the next 10 pages at 100%. DO NOT FIT TO PAGE.
4. **Cutting fabric before class is not necessary or recommended.**

Sewing Machine Required

GYLEEN X FITZGERALD**SS010 - Road Trip**

3-Hour Workshop - \$95

4 pm - 7 pm EDT, Wednesday, June 25

The workshop fee includes the \$33 Class Kit.

Diamonds turn corners and bend the rules of the classic Trip Around the World. Girl, boy, let's get road trip ready. What a blast with this quick stitch wall hanging

All Levels

Class Kit includes Polygon 1 tool and pattern. The \$33 class kit is included in the workshop fee. **Please note: Kits will only be mailed within the continental United States.**

Students to Provide

- Six fabrics - 2 to 3, 3" strips of each assorted fabrics.
- Sewing machine with manual;
- ¼" foot without edge guide (if possible);
- (2) thread colors, one for the top and another in the bobbin and that is visible on the wrong side of fabric;
- seam ripper;
- thread snips;
- rotary cutter, ruler and mat;
- extension cord;
- straight pins;
- finger pressing tool;
- and batting to use as a design wall (optional).
- Also, a chair pad or booster is handy.

Sewing Machine Required

GYLEEN X FITZGERALD**SS011 - Meme's Garden**

3-Hour Workshop - \$100

4 pm - 7 pm EDT, Thursday, June 26

The workshop fee includes the \$39 Class Kit.

Meet Meme, the Modern Grandmother! Learn how to execute the perfect "Y" inset seam, all by machine. Project makes huge hexagon flowers. You choose the final bouquet.

All Levels

Class Kit includes Polygon 2 Tool and pattern. The \$39 class kit is included in the workshop fee. **Please note: Kits will only be mailed within the continental United States.**

Students to Provide

- 1 to 3, 5 1/2" x WOF assorted strips for flowers
- 1, 5 1/2" x WOF strip for flower centers
- Sewing machine with manual;
- 1/4" foot without edge guide (if possible);
- (2) thread colors, one for the top and another in the bobbin and that is visible on the wrong side of fabric;
- seam ripper;
- thread snips;
- rotary cutter, ruler and mat;
- extension cord;
- straight pins;
- finger pressing tool;
- and batting to use as a design wall (optional).
- Also, a chair pad or booster is handy.

Sewing Machine Required

DAVID OWEN HASTINGS

SS012 - How to Quilt It, Made Modern!

3-Hour Workshop - \$80

12 pm - 3 pm EDT, Thursday, June 26

In this no-sew design workshop, I will guide you through a series of exercises to build your skill and confidence with machine (and hand!) quilting.

DEVELOP DESIGN SKILLS FOR A QUILTING PLAN BEFORE SEWING A STITCH

Stretch your design muscles and create a quilting plan! Sounds scary, but it's so easy, and no special drawing skills are required. Working with paper, colored pens, and provided images, you'll get hands-on practice developing a roadmap for your next quilting project.

- **START SMALL AND SIMPLE** with drawing exercises that go from simple to more complex. Overlay printed quilt designs with tracing paper and use colored pens to plan out your designs.
- **UNDERSTAND** how to approach modern machine and hand quilting from a functional perspective as well as with an eye on design... AND understand how to be more economical with your time as you work on the quilting.
- **BUILD YOUR CONFIDENCE** by practicing a few simple design techniques that can be applied to any quilt.
- **UFOs NO MORE:** Bring an 8.5 x 11 photo of an unquilted top, and I will guide you through the steps to develop a quilting plan for your specific design!

At the end of the workshop, you will have a clear set of design ideas for modern quilting and be ready to approach your next quilting project with confidence.

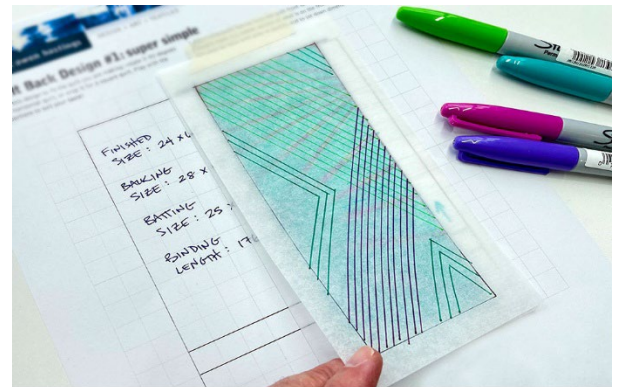
All Levels

Students to Provide

- **Please print out the workshop PDF handout** and bring it with you to class (it will be sent to paid participants).
- **Bring one photo of a quilt top** printed on 8.5 x 11 paper. Ideally, this is a quilt top of your own design. We will explore design options for your quilt, after doing several exercises.
- 12-inch quilting ruler
- Drafting tape or painter's tape
- Black ultra fine point permanent marker or mechanical pencil with eraser
- Ultra fine point colored permanent marker set
- Fine point colored permanent marker set
- 20 sheets of vellum paper (8.5 x 11)
- Round disposable plate or bowl (paper or plastic)

TOOLS/EQUIPMENT

A PDF handout with quilt designs and grids will be emailed to you in advance.



You must print out the PDF, single-sided, and bring it with you to the workshop.

This is a no-sew workshop, suitable for all levels.

DAVID OWEN HASTINGS

SS013 - Layered Walking Foot Quilting

6-Hour Workshop - \$105

12 pm - 6 pm EDT, Friday, June 27

Break free from traditional machine quilting using your walking foot and a domestic machine. Leave behind previous notions of stitching in the ditch or overall quilting.

Approach machine quilting in an improv style, with a little planning!

With a simple supply list and a little pre-prep of 3 – 6 small quilt sandwiches, you will explore new ways to approach walking foot machine quilting. I will also show you how to gusset join your workshop samples into a finished mini quilt!

- **PREPARE IN ADVANCE** 3 – 6 small quilt sandwiches from provided designs: these will be the canvases for your machine quilting artistry!
- **TAKE INSPIRATION** from the piecing to stitch an initial quilting motif.
- **OVERLAY** a new machine quilting motif, using a different thread color with new positioning, and allowing the motifs to overlap.
- **LAYER** additional modern motifs using a third and fourth thread color to add more texture and depth. Ramp up the texture with some big stitch hand quilting.

You will leave the workshop with concrete skills for a modern, layered approach to walking foot quilting. Bring your prepared quilt sandwiches and your spirit for quilting adventure! I will provide full hands-on instructions in class. This is an all-levels workshop. Basic knowledge of walking foot machine quilting is helpful, but not necessary. We will learn together!

All Levels

Students to Provide

- **Four cotton fabrics:** You will need four quilting cottons: a dark neutral, a light neutral, a bright color, and a dark color. An example palette would be white (or cream), black (or charcoal grey), hot pink, and maroon. Make sure the two neutrals read clearly as very light and very dark, and the two colors are related, but one is bright and one is dark. Solids or very subtly textured fabrics work best: if there is a texture, it should be extremely low-volume/low-contrast and appear to be a solid when viewed from a short distance.
 - o **Dark Neutral:** 1.5 yards
 - o **Light Neutral:** 0.5 yard
 - o **Bright Color:** 0.5 yard
 - o **Dark Color:** 0.5 yard
 - **Cotton batting:** one 30" x 24" piece cut into 3 – 6 10" x 12" pieces
 - **Cotton backing:** one 31.5" x 25" piece cut into 3 – 6 10.5" x 12.5" pieces from the dark neutral fabric
 - **Four spools of 50 wt. sewing thread:** white (or cream), medium grey, black, and one bright color that matches your bright colored fabric. Cotton thread like Aurifil is great, Sulky rayon is a nice option for the bright color.
 - **Optional:** #8 perle cotton thread in a bright color to match your bright fabric.

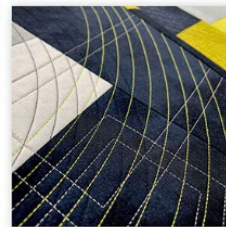
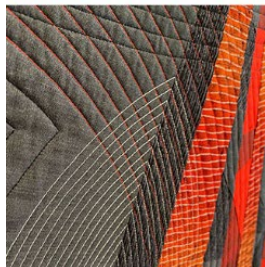
You will receive a PDF handout with patterns and directions for preparing 3 – 6 simple quilt sandwiches, which you will need to piece and prepare **in advance** of the workshop. These will be the canvases for your machine quilting artistry!

DAVID OWEN HASTINGS - SS013 - Layered Walking Foot Quilting**TOOLS/EQUIPMENT**

- Home sewing machine with walking foot
- Iron and ironing board
- Small scissors to clip threads
- Seam ripper
- Rotary cutter
- Small cutting mat
- Small quilting ruler
- Hera marker (or large paperclip, which can be used as a hera marker)
- Straight pins
- Embroidery needle + milliner's needle

Please Note: Try out your walking foot attachment before class until you are confident it is working properly.

This is an all-levels class. You should be comfortable using your sewing machine, and it should be in good working order. I look forward to sharing and sewing with you!

Sewing Machine Required

JOYCE HUGHES**SS014 - Hummingbird with Fuchsia Panel: Dimensional Thread Painting**

6-Hour Workshop - \$155

12 pm - 6 pm EDT, Thursday, June 26

The workshop fee includes the \$60 Class Kit.

Want to learn Dimensional Thread Painting but you think it is too hard. In this class, you will start with a Beautiful Panel to create a piece of Art! You will learn the proper steps of Dimensional Thread Painting and find it to be a fun and creative technique. Explore the various thread selections, setting up your machine for stitching techniques with free motion quilting of zig zag and straight stitching. See the fabric come to life as you sew and layer the threads on top of your design.

You will use Thread as Paint—sew with different types of threads and color combinations. Learn how to create interesting texture and dimension in your quilting project. You will leave with a full knowledge of Dimensional Thread Painting and create a one-of-a-kind piece of Art!

Techniques Taught: Dimensional Thread Painting, Chrystal Embellishment, Blocking and Squaring a Quilt and More!

All Levels

Class Kit includes a Digitally Printed Panel and 20 threads for the Top and Bobbins. The \$60 class kit is included in the workshop fee. **Please note: Kits will only be mailed within the continental United States.**

Students to Provide

Sewing Machine in good working order, cleaned and oiled. Please bring machine manual - in case of any machine issues during class.

Free motion foot/ Darning foot (Machine and foot must be able to do zig-zag).

Supplies:

Extra EMPTY bobbins, minimal 3

Scissors to cut threads

Practice quilt sandwich, approx., 12 x 12

***** If you like to use gloves, table sliders, etc. for Free Motion Quilting, Please bring to class!**

Sewing Machine Required



JOYCE HUGHES**SS015 - Raw Edge Fall Harvest Panel: Dimensional Thread Painting**

6-Hour Workshop - \$155

12 pm - 6 pm EDT, Friday, June 27

The workshop fee includes the \$60 Class Kit

Learn the basics of Raw Edge Applique, Dimension Thread Painting and Embellishment on this beautiful Raw Edge Fall Harvest wall hanging. Explore the various thread selection, stitching techniques with free motion quilting of zig zag and straight stitching, bobbin work and embellishing with crystals. See the fabric come to life as you sew and layer the threads on top of your design. You will use Thread as Paint – and sew with different types of threads and color combinations.

Confident Beginner Level

Class Kit includes Raw Edge Applique Fall Design, Batting, Muslin and 18 Threads for Top and Bobbins. The \$60 class kit is included in the workshop fee. **Please note: Kits will only be mailed within the continental United States.**

Students to Provide

Machine in Good working order, cleaned and oiled. Please bring your manual to help with machine problems that may happen in class.

Free motion foot/ Darning foot (Machine and foot must be able to do zig-zag).

Supplies:

Extra EMPTY bobbins, minimal 5

Scissors to cut threads

Practice “Quilt Sandwich” 12” x 12”

Needles- Topstitch 90

***** If you like to use gloves, table sliders, etc. for Free Motion Quilting, Please bring to class!**

Sewing Machine Required



JILL HUNTINGTONSS016 - **Improv Roses**

3-Hour Workshop - \$65

10 am - 1 pm EDT, Thursday, June 26

As a Portland, Oregon native, the beautiful "City of Roses" inspires my designs. In this workshop, we'll grow a garden of colorful roses as we explore: +improv foundation piecing techniques, +tips on fabric selection, +approaches to color placement, +project ideas using Improv Roses. Plus, follow me on a fascinating journey through Portland's rose history - it involves a wedding, a war, and some pretty amazing women! COME GROW A GARDEN OF ROSES TOGETHER!

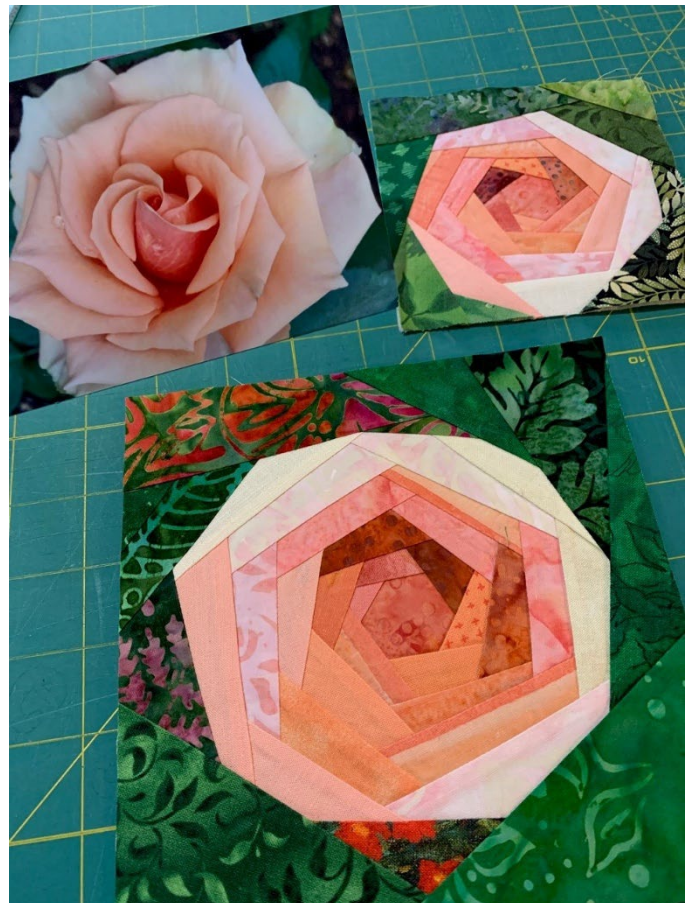
All Levels

An optional class kit is available; see #SS016Kit - Improv Roses Optional Class Kit for details.

Students to Provide

Sewing machine, thread (neutral color), fabric scissors, seam ripper, pins, pencil, cutting mat/rotary cutter, acrylic ruler, iron/ironing station, photos or magazine clippings of roses for reference (optional), FABRIC REQUIREMENTS: 6 squares of muslin: (2) 4-1/2" squares, (2) 6-1/2" squares, (2) 8-1/2" squares, wide variety of colorful scraps for rose petals (largest size needed approx. 2" x 8"), wide variety of scraps of medium and dark greens for background (batiks, meadow prints, etc.) See SUPPLY LIST for notes on fabric selection. Improv Rose Kits containing a wide variety of curated fabrics are available for purchase (optional), in 6 vibrant colors: butterscotch, pink, purple, red, watermelon, yellow. See the selection of colors on my website at huntingtonquilt.com

[Click here for the Improv Roses Supply List.](#)

Sewing Machine Required

JILL HUNTINGTON**SS016 - OPTIONAL CLASS KIT for workshop #SS016, Improv Roses - \$25**

Please note: Kits will only be mailed within the continental United States.

Improv Rose Fabric Kits (each kit makes (2) - 6" finished rose blocks of the same color)

Contents: 2 muslin foundations, 24 rose petal fabrics, 10 green background fabrics (Please see the 6 color choices on my website at

huntingtonquilt.com (Students are welcome to purchase more than one fabric kit - the colors are joyous and can be hard to pick just one!)

[Click here to see Improv Roses Fabric Kit info.](#)



JILL HUNTINGTON

SS017 - Where the Mountain Meets the Roses - Two Techniques in One

6-Hour Workshop - \$130 - The workshop fee includes the \$25 Class Kit

10 am - 4 pm, Friday, June 27

Did you know that jigsaw puzzles are great for brain health? In this exciting workshop, discover my original technique called JIGSAW PUZZLE PIECING (JPP) to construct a complicated mountain pattern with ease. We'll also learn improv foundation piecing to make beautiful roses. As we make this colorful mini quilt, we'll explore: +the science behind jigsaw puzzles and brain health, +JPP versus FPP, +two techniques deconstructed - JPP and Improv. Let's put our brains together and get creative!

All Levels

The Required Class Kit includes the JPP mountain line art pattern with instructions and step-by-step photographs and instructions for foundation pieced improv roses (\$25 value). Students must supply their own fabric for the sky/mountain/foothills. Students have the choice to supply their own fabric for the roses as well, or may purchase Improv Rose Kits (See SS016Kit). These are available in 6 color choices (each kit makes two 6" finished roses). See color choices on my website: huntingtonquilt.com. The \$25 class kit is included in the workshop fee. **Please note: Kits will only be mailed within the continental United States.**

Students to Provide

[Click here to download the Supply List with notes on fabric selection and pre-class preparation.](#)

WHERE THE MOUNTAIN MEETS THE ROSES pattern - included in required class kit / Optional: IMPROV ROSES KIT (in choice of 6 colors) - see workshop #SS016Kit

Sewing machine, thread (neutral color), fabric scissors, paper scissors, pins, pencil, colored pencils (optional), cutting mat/rotary cutter, acrylic ruler, seam ripper, iron/ironing station, transparent ("Scotch") tape in a desktop tape dispenser (single-handed tape dispensing is a MUST), 5 pieces of freezer paper, each piece cut to 5" x 10" (for hand tracing) - OR - 5 pieces at 8-1/2" x 11" (for printing on home computer), FABRIC REQUIREMENTS: You will need 4 purples in a gradient from lightest (#1) to darkest (#4). 1/4 yard (or fat quarter) each: blue (for sky), white or off-white (for snow), purples #1, #2, #4. Purple #3 = less than 1/4 yard. Fabric for roses: (11) - 6" squares lightweight muslin, lots of colorful scraps (largest scraps needed approx. 2" x 5") in colors of choice for rose petals, wide variety of medium and dark greens for background around roses.

See the downloadable SUPPLY LIST for notes on fabric selection and pre-class preparation.

Sewing Machine Required



MARY NESNAY**SS018 - Introduction to Machine Embroidery**

6-Hour Workshop - \$160 - The workshop fee includes the \$40 Class Kit

12 pm - 6 pm EDT, Tuesday, June 24

Learn about best practices for embroidery including: threads, needles, stabilizers, proper hooping methods, registration, troubleshooting common embroidery issues, adding and editing designs on your machine, digitizing principles, embroidery stitch types, applique techniques, floating fabrics, and ITH (in-the-hoop) projects. We will create 3 projects in class: napkin, tote bag, and key fob.

All Levels**Class Kit Includes:**

- USB Stick
- Embroidery design/pattern files
- .PDF instructions of workshop
- Napkin
- Tote bag
- 1 piece of Canvas
- 2 pieces of Vinyl
- Keyring Clasp
- 1 Set of Snaps

* All kits **exclude**: tear away stabilizer, threads, bobbin, and 75/11 needles.

The \$40 class kit is included in the workshop fee. **Please note: Kits will only be mailed within the continental United States.**

Students to Provide

- Embroidery machine with embroidery attachment arm and embroidery foot.
**Preferred hoop size: 5"x7" or larger (*4"x4" is acceptable; projects will be smaller)
- 1 to 2 yards - Tear Away Stabilizer
- Fabric Scissors
- Applique Scissors
- 505 or KK100 Spray Adhesive
- 75/11 Embroidery Needles
- 60 wt. White Embroidery Bobbin
- 40 wt. Embroidery Thread
 - A.) White
 - B.) Black
 - C.) Red
 - D.) Blue
 - E.) Silver or Gold

Embroidery Machine Required

MARY NESNAY

SS019 - The Art of Custom Patch Making

3-Hour Workshop - \$125 - The workshop fee includes the \$45 class kit.

12 pm - 3 pm EDT, Wednesday, June 25

Learn how to create your own custom patches from start to finish. We will discuss proper pathing for digitizing embroidery designs, adding designs on your machine to templates, various methods used to sew patches, and the pros & cons of each method. Three patches will be demonstrated: pre-made name badge, sewing patch, and a holiday theme. A 3" blank circle template is included so you can add any custom design you like.

All Levels

****Preferred hoop size: 4"x4" (Can use a 5" x 7" hoop, but 4"x4" hoop is best.)****

Class Kit includes:

- USB Stick
- Embroidery design/pattern files
- .PDF instructions of workshop
- Twill fabric
- BadgeMaster or Ultra Solvy stabilizer
- Iron-on Patch Back Adhesive
- 1 Pre-made blank patch
- 1 Teflon sheet

* All kits **exclude**: tear away stabilizer, threads, bobbin, and 75/11 needles.

The \$00 class kit is included in the workshop fee. **Please note: Kits will only be mailed within the continental United States.**

Students to Provide

- Embroidery machine with embroidery attachment arm and embroidery foot
- ****Preferred hoop size: 4"x4" (Can use a 5" x 7" hoop, but 4"x4" hoop is best.)****
- 1 yard - Tear Away Stabilizer
- 505 or KK100 Spray Adhesive
- Fabric Scissors
- 75/11 Embroidery Needles
- 60 wt. White Embroidery Bobbin
- 40 wt. Embroidery Thread
 - A.) White
 - B.) Black
 - C.) Silver
 - D.) Red
 - E.) Blue

Embroidery Machine Required



MARY NESNAY**SS020 - How to Start a Home Embroidery Business**

3-Hour Workshop - \$90

4 pm - 7 pm EDT, Wednesday, June 25

This course will explain all you need to know to start your own home embroidery business. If you are considering selling on Etsy, at a craft show, creating a website, or possibly opening a small storefront, this class is for you.

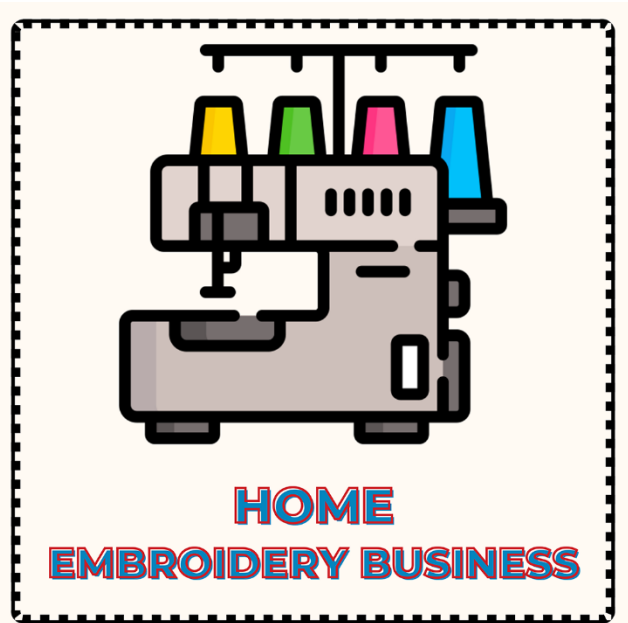
The following topics will be discussed:

- Is it a hobby or a small business?
- When & why you should create an LLC
- Types of embroidery services, such as: digitizing, ITH patterns & designs, embroidery for B2B (wholesale), B2C, athletics (school sports jerseys), fundraisers
- What are good entry embroidery machines for a business
- Types of embroidery machines (home vs. commercial, flatbed vs. tubular, single-needle vs. multi-needle, 1-head vs. 6-head)
- Website options (your own website, Shopify, Etsy, etc.)
- How to setup your workspace
- Where to buy embroidery blanks wholesale (*hint: must have a business sales tax id to do so)
- Tradeshows
- Basics of pricing your work
- Copyright infringement vs. legal licensing
(*No, you cannot sell Disney designs that are on your machine!)
- Digitizing: do-it-yourself or outsource?

*You will receive a .pdf file of the information discussed in this course and an embroidery design.

Students to Provide

Notebook & pen



GERALDINE WILKINS

SS023 – Lone Star: Free Motion Practice to Quilt Plan

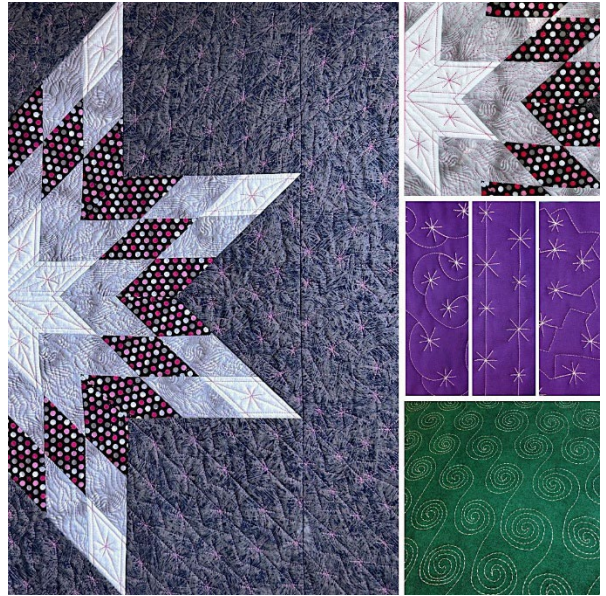
3-Hour Workshop - \$95

4 pm - 7 pm EDT, Thursday, June 26

The workshop fee includes the \$35 Class Kit

Learn several free-motion designs including stars and how to transition from practice to stitching real quilts. We will use my tips to create a personalized quilting plan as well as how batting choice shapes the final look. Stitch your Half Lone Star quilt top at home using the step-by-step pattern with photo illustrations—No Y-seams, No diamonds to cut, No stress! This workshop bridges the gap between learning and doing—turning hesitation into quilting success!

Confident Beginner - Intermediate - Advanced Level



Class Kit includes Free motion pattern booklet, Half Lone Star Quilt Pattern, Free motion quilting technique and tips sheet. The \$35 class kit is included in the workshop fee. **Please note: Kits will only be mailed within the continental United States.**

Students to Provide

[Click here to download the workshop supply list.](#)

Small notebook for class notes, tips and techniques

White board with both a blank and ruled side

Fine point Dry Erase marker

Clear 11 x 14 Plexiglass sheet available at Home Depot or Lowes

Duct Tape - Place strips around the perimeter of the plexiglass.

Customary free motion quilting tools - free motion quilting foot, quilting thread, gloves, iron-off fabric marking tool, top-stitch needles, and glider or slider.

A sewing machine capable of free motion quilting

Required Preparation, Practice Quilt Sandwiches:

Cotton fabric - Cut six- 12-inch x 10-inch pieces of solid, medium fabric

Cotton batting - Cut six - 14-inch x 12-inch pieces of low/medium loft

Muslin for backing - Cut six- 14-inch x 12-inch pieces

Half Lone Star Mini Quilt

After class enrollment, which includes the class kit, make the Half Lone Star mini-quilt. In class, we preview design placements and create a quilting plan.

Sewing Machine Required

GERALDINE WILKINS

SS024 - Feathered Rainbow: Free Motion Feathers for Any Quilt

3-Hour Workshop - \$95

4 pm - 7 pm EDT, Friday, June 27

The workshop fee includes the \$35 Class Kit

Learn how to stitch four beautiful feather designs. Using guided practice sheets and hands-on exercises, you'll build confidence stitching on practice quilt sandwiches. Then, choose your favorite feather and create a personalized quilting plan for your Rainbow quilt. This class is perfect for quilters ready to add elegant feathers to their quilting toolbox!

Confident Beginner - Intermediate - Advanced Level

Class Kit includes Free motion Feather Practice Booklet, Feather Rainbow Mini Quilt Pattern, Free motion quilting techniques & tips sheet. The \$35 class kit is included in the workshop fee. **Please note: Kits will only be mailed within the continental United States.**

Students to Provide

[Click here to download supply list.](#)

Small note book for class notes, tips and techniques

White board with both a blank and ruled side

Fine point Dry Erase marker

Clear 11 x 14 Plexiglass sheet available at Home Depot or Lowes

Duct Tape - Place strips around the perimeter of the plexiglass.

Customary free motion quilting tools - free motion quilting foot, quilting thread, gloves, iron-off fabric marking tool, top-stitch needles, and glider or slider.

A sewing machine capable of free motion quilting

Required Preparation, Practice Quilt Sandwiches:

Cotton fabric - Cut six- 12-inch x 10-inch pieces of solid, medium fabric

Cotton batting - Cut six - 14-inch x 12-inch pieces of low/medium loft

Muslin for backing - Cut six- 14-inch x 12-inch pieces

Rainbow Mini Quilt

After class enrollment, which includes the class kit, make the Rainbow mini quilt. In class we preview design placements and create a quilting plan.

Backing fabric:

One low/medium loft cotton batting at least 36 x 36 inches

One backing fabric at least 36 x 36-inches

Sewing Machine Required

