

QuiltFest Virtual Schoolhouse #12 Workshop Catalog

Cristina Arcenegui Bono

SH12-001 – iPad for Quilters: Procreate

6-Hour Workshop - \$85

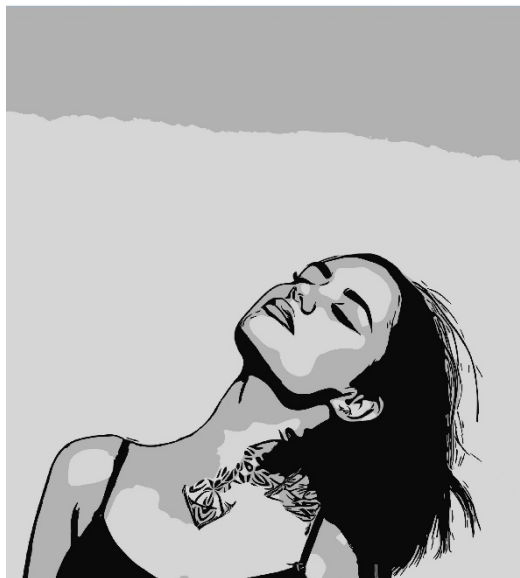
12 pm – 6 pm EDT, Thursday, October 16

Whether you're new or returning, this Procreate for quilters workshop is your next creative adventure. Using Procreate, you'll learn to sketch, design, and plan quilting patterns with ease - no fancy drawing skills needed. Explore digital doodling to sharpen your free motion skills and bring your quilt ideas to life in a whole new way. Ready to quilt smarter, not harder? Let's dive in!

All Levels

Students to Provide

- an iPad (any model that supports the Procreate app)
- the Procreate app (available on the App Store for a one-time purchase fee)
- Apple Pencil or compatible stylus
- notebook, pencil, and pen



QuiltFest Virtual Schoolhouse #12 Workshop Catalog

Cristina Arcenegui Bono

SH12-002 – AI (Artificial Intelligence) for Quilters

3-Hour Workshop - \$60

10 pm - 1 pm EDT, Friday, October 17

Curious about how AI can boost your quilting? In this virtual, hands-on workshop, you'll learn to use easy AI tools to generate quilt designs, build color palettes, and create visual content for your projects. No tech experience needed - just your quilting brain and a bit of curiosity. Cristina will guide you step-by-step. Come see what you've been missing; AI isn't the future, it's now!

All Levels

Students to Provide

- A PC or a Mac and an iPad



QuiltFest Virtual Schoolhouse #12 Workshop Catalog

Daisy Aschehoug

SH12-003 - Sweet Gum Quilt

6-Hour Workshop - \$85

10 am - 4 pm EDT, Thursday, October 16

Discover the beauty of curves with the Sweet Gum quilt block! This dynamic design combines quarter-circle units with elegant Gothic Arch units—a beautifully-versatile, curvy building block. You'll learn how to piece smooth, easy curved seams that open up endless creative possibilities for blocks, borders, and beyond. Bring a stack of high-contrast fat quarters and get ready to stitch your own stunning curved masterpiece!

All Levels



Students to Provide

The Sweet Gum block mixes quarter circle squares with gothic arc units for a dazzling display of curved piecing! One of the main considerations to make regarding fabric selection is contrast. What are the differences in the fabric that will allow your piecing to stand out? Think about various types of contrasts: color (blue versus red), value (light and dark), print texture (floral versus striped), and print scale (small versus large scale). The size of your project determines the exact fabric needed.

MATERIAL LIST

- General sewing supplies: machine, needles, thread, cutting mat, rotary cutter.
- Pins
- Sewline (or comparable brand with small diameter) glue stick for basting
- 4-9 pairs of contrasting fat quarters.

The Sweet Gum block is sewn to 12 1/2" and finished in a quilt at 12".

Nine pairs of fat quarters will make a quilt that finishes at 36" square.

Acrylic template sets are \$25 and available at warmfolk.com. Workshop kits include acrylic template sets, Sewline glue pen, and pre-cut fabric pieces for practice. If you have any questions, please email me at daisy@warmfolk.com.

I look forward to seeing you in the workshop! If you have any questions, please email me at daisy@warmfolk.com. I look forward to seeing you in the workshop!

[Click here](#) to download the workshop materials list.

Sewing Machine Required

QuiltFest Virtual Schoolhouse #12 Workshop Catalog

Daisy Aschehoug

SH12-004 – Many Nested Curves

6-Hour Workshop - \$85

10 am - 4 pm EDT, Saturday, October 18

Take your curved piecing skills to the next level in The Many Nested Curves workshop—a curved piecing masterclass! In this session, you'll dive into two key topics: how to create the striking Many Nested Curves block, and how to use the included templates to make quarter-circle units in six sizes, from a 2" to a 7" radius. Daisy will guide you through every step of the process—cutting, basting, sewing, pressing, and trimming—with a focus on accuracy and confidence. Whether you're new to curves or looking to refine your technique, you'll leave equipped with the skills to master smooth, precise curved seams.

All Levels

Students to Provide

This workshop starts with the basics of curved piecing. We'll talk about the geometry of a precise quarter circle square and develop best practices for cutting, basting, sewing, and pressing our curves. The first part of class will also cover how to use the templates to create basic quarter circle square blocks that finish in a quilt with curves that have radii of 2", 3", 4", 5", 6", and 7".

TOOLS: Sewing machine, thread, pins, rotary cutter, mat, and iron. A glue stick is mandatory. The Sewline glue pen style is recommended (smaller diameter of the glue than a regular, school-style glue stick).

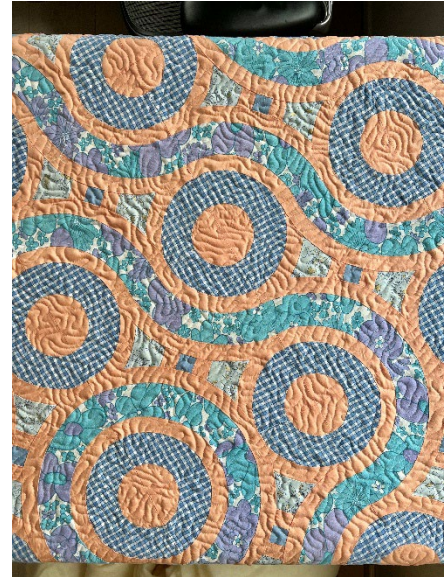
FABRIC: Half a yard each of four contrasting fabrics. Fabrics that look similar to each other (for example, four kinds of dark blues) will not read well in the finished quilt. But, the sample quilt uses a variety of prints and solids in each colorway (for example, there are a half dozen pinks in the pink "area" of the quilt.) The first blocks made in class might require improvement so practice material is suggested before using material for a finished project. Quilting cotton or linen blends are recommended. Thinner fabrics like lawns or voiles will be difficult to manage in these curved seams.

TEMPLATES: Paper templates will be emailed one week prior to the workshop. Acrylic templates are highly recommended and available to purchase at warmfolk.com.

Email daisy@warmfolk.com with any questions about the workshop or fabric requirements.

[Click here](#) to download Daisy's workshop materials list.

Sewing Machine Required



QuiltFest Virtual Schoolhouse #12 Workshop Catalog

Sandra Chandler

SH12-005 – Repurposed Denim Quilt

Workshop: The Spinning Wheel

3-Hour Workshop - \$60 (includes \$10 class kit)

4 pm - 7 pm EDT, Friday, October 17

Create a bold, denim-powered quilt with Sandra Lee Chandler! In this workshop, you'll transform jeans and fabric scraps into a Spinning Wheel Quilt based on the dynamic Key Block. Learn curved piecing, how to cut and prep denim, and explore layout variations to make your design truly shine. Whether you're experienced or just beginning, this class blends creativity, sustainability, and step-by-step guidance into one unforgettable quilting experience.

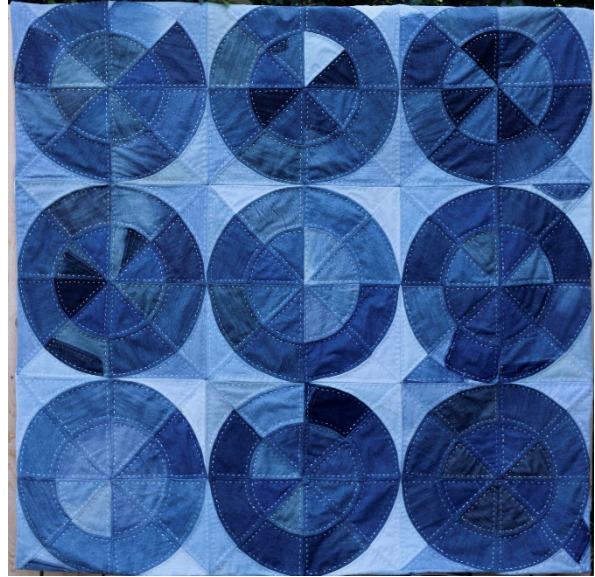
All Levels

The workshop fee includes the \$10 class kit. The **Class Kit** includes a pdf of the Spinning Wheel pattern. **Please note: Kits will only be mailed within the continental United States.**

Students to Provide

- ✓ Sewing Machine (with denim needles and a walking foot if available)
- ✓ Pre-washed Denim (old jeans or fabric scraps—different shades for contrast)
- ✓ Quilt Pattern Templates (C and D pieces)
- ✓ Rotary Cutter & Cutting Mat
- ✓ Fabric Scissors & Seam Ripper
- ✓ All-Purpose Thread or Heavy-Duty Thread (contrast or matching)
- ✓ Pins, Clips, & Marking Tools (chalk, wax, or fabric pencil)
- ✓ Iron & Pressing Mat
- ✓ Notebook & Pen for taking notes

Sewing Machine Required



QuiltFest Virtual Schoolhouse #12 Workshop Catalog

Sandra Chandler

SH12-006 – Sew Your Own Quilted Blazer - In Just ONE Day

6-Hour Workshop - \$70

10 am - 4 pm EDT, Saturday, October 18

MAKE IT. WEAR IT. FLAUNT IT.

Ready to unleash your creativity and walk out in a blazer you made yourself? Join our joyful, beginner-friendly workshop and turn fabric into fashion—in a single day!

What's Happening:

We're making a stunning Quilted Blazer using the McCall's pattern. Whether you're brand new to sewing or just need a creative jumpstart, this class is for you! I'll guide you every step of the way, from threading your machine to the final stitch.

You'll Learn How to:

- Thread and troubleshoot your sewing machine with confidence
- Read and follow a commercial pattern (yes, you can!)
- Cut and sew quilted fabrics—no experience needed
- Add binding and finish seams like a pro

Walk Away With:

- A bold, cozy blazer that's 100% YOU
- New sewing skills and a big boost of creative confidence
- Fun memories and maybe a few new friends!

Let's sew, laugh, and create something fabulous—together!

Spaces fill fast—reserve your spot now!

All Levels

Students to Provide

Your sewing machine (must have straight + zigzag stitch, and tension control)

The pattern: Quilted Blazer – McCall's M7332

Fabric & notions listed on the back of the pattern

Matching thread, scissors, pins or clips, measuring tape, seam ripper, rotary cutter, ruler, and a cutting mat.

Sewing Machine Required



QuiltFest Virtual Schoolhouse #12 Workshop Catalog

Carol W Clanton

SH12-007 – Roses All Tied Up!

3-Hour Workshop - \$65 (includes \$10 class kit)

12 pm – 3 pm EDT, Wednesday, October 15

Come have fun creating your own colorful bouquet of flowers as you learn to make these fancy Rushed Roses. You can choose to use one fabric for all three roses or add some variation by using two different fabrics for the center and for the petals. You will gain confidence in the Needleturn Technique as you use freezer paper to stitch smoothly around your leaves and bow to tie up your bouquet. All sewing done by hand.

All Levels



The workshop fee includes the \$10 class kit. The **Class Kit** includes a Pattern and a Worksheet to be sent digitally.

Students to Provide

BEFORE CLASS cut the following:

- 13 ½" square of background fabric (the square will be a finished 12 ½" block)
- Strip of fabric, 1 1/2" x 26" center of Rushed Rose
- Strip of fabric, 1 ½" x Width of Fabric for outside petals of Rushed Roses
- One ¾" x 30" Bias Strips for stems

Hint: If you want to use the same green fabric for the leaves, 2 bias strips cut diagonally across a 9 ½" fabric square will give you enough fabric to cut the bias strips needed as well as the leaves.

Fabric: All fabric should be 100% cotton. Lighter weight 100% cotton fabric works best for gathering the strips of fabric for the Rose construction. Choose various shades of green, if you like, for leaves or use the 9 ½" fabric square as suggested above. 8" fabric square for the ribbon

Thread: Neutral color of Hand Quilting Weight Thread for flower construction. 50 wt. cotton to match the appliques, not the background. If you cannot find the color you need in cotton, polyester covered cotton will work. Aurifil #80 cotton works well also.

Needles: Your favorite needle to use with the quilting thread. For the actual applique, a long slim needle size 10 to 12 in a sharp or milliner needle is good.

Other supplies: Small ruler (no bigger than 12 inches), applique pins, embroidery scissors, small paper scissors, fabric marker/pencil of your choice for pattern and marking fabric, freezer paper, toothpick, Light box (optional), Iron and Ironing board standing by, good lighting, *and any other sewing supplies that make you happy.*

QuiltFest Virtual Schoolhouse #12 Workshop Catalog

Carol W Clanton

SH12-008 – Vintage Poppy Made New

3-Hour Workshop - \$65 (includes \$10 class kit)

12 pm – 3 pm EDT, Friday, October 17

Inspired by a 1920s “Poppies” quilt, this 3-hour workshop is perfect for beginners or seasoned stitchers. Using minimal supplies, learn needleturn appliqué using bold red and green fabrics to create a 12" block. Big, easy-to-handle shapes make it stress-free and satisfying. You'll leave with the skills and confidence to finish the block at your own pace. All Stitching Done by Hand.

All Levels



The workshop fee includes the \$10 class kit. The **Class Kit** includes a Pattern and a Worksheet to be sent digitally.

Students to Provide

BEFORE CLASS:

- Cut 13" square out of background fabric. (Finished block will be 12 ½")
- Cut a bias strip 16" x ¾" for the stems.

SUPPLY LIST

Fabric: This is a good time to use your stash. Choose 100% cotton **red and green fabric** in a variety of light and dark values. For example, the leaves are sewn using one light and one dark green fabric. The poppy calls for shades of red and a little bit of purple or very deep red.

Background should be a light color (white shows off the applique).

Thread: 100% cotton 50 wt. thread to match your appliques, not your background fabric. If you cannot find the color in cotton you can also use polyester covered cotton. Aurifil has a 100% cotton 80 wt. thread that works well also.

Needles: A long slim needle works best for needleturn. Size 10 to 12 Sharps or Milliner needles are my favorite.

Other Supplies: Freezer paper, small paper scissors, fabric marker/pencil for tracing pattern and marking fabric, embroidery scissors for fabric, ½" or ¾" applique pins, toothpick, iron and ironing board standing by, thimble if you use one, light box (optional), and any other sewing supplies that make you happy!

QuiltFest Virtual Schoolhouse #12 Workshop Catalog

Gyleen X Fitzgerald

SH12-009 – Pandora

3-Hour Workshop - \$72 (includes \$12 class pattern)

12 pm - 3 pm EDT, Wednesday, October 15

SH12-009Kit Optional Kit (\$31)

Wow, is the 1st word; Graphic is the 2nd that describes this modern table runner. Learn the Butterfly Seam piecing technique for perfect inset seams. Perfect and quick for holiday giving. **All Levels**

The \$12 class kit includes the required pattern that will be emailed to workshop participants.

The Polygon4 Tool is required for this workshop. Students who do not already have the tool can purchase it here: [click here](#).

Students to Provide

Basic sewing supplies

Sewing machine & accessories

½-yard dark fabric

½-yard bright fabric

½-yard of Fancy fabric

1-yard background fabric

Sewing Machine Required



Optional Kit for Pandora, SH12-009Kit, \$31

The Polygon4 Tool is required for this workshop. Students who do not already have the tool can purchase it here: [click here](#).

QuiltFest Virtual Schoolhouse #12 Workshop Catalog

Gyleen X Fitzgerald

SH12-010 – Mining Diamonds (From Your Stash)

3-Hour Workshop - \$72 (includes \$12 class pattern)

12 pm - 3 pm EDT, Friday, October 17

SH12-010Kit Optional Kit (\$31)

Ready to clean-up and clear out? Great modern stash buster. One block with options of organized or controlled scrappy or random quilters delight scrappy. Two options for quilt layout designs. Learn how to master criss-cross seams. This block is huge! Lap quilt or bed quilts done in a flash. Let's have some fun playing in the scraps.

All Levels

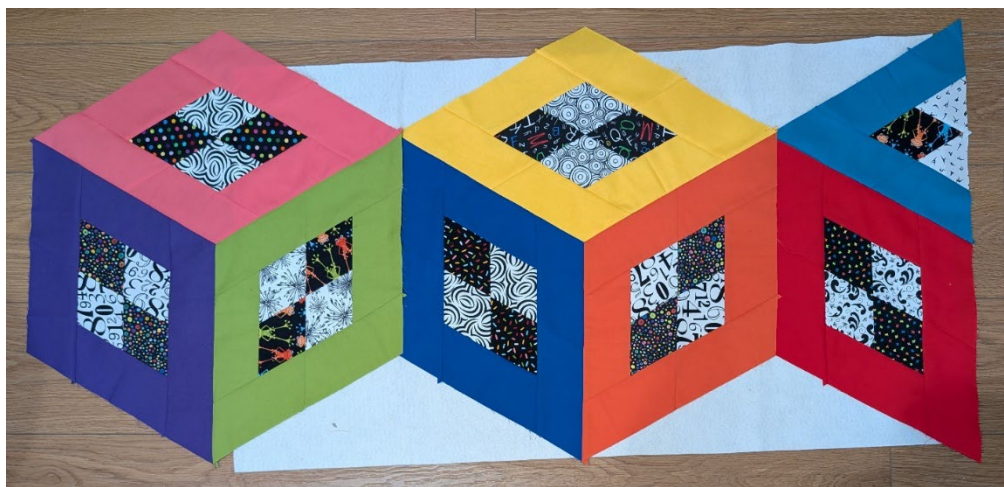
The \$12 class kit includes the required pattern that will be emailed to workshop participants.

The Polygon2 Tool is required for this workshop. Students who do not already have the tool can purchase it from the website: [click here](#).

Students to Provide

- Basic sewing supplies
- Sewing machine & accessories
- Lots of 3" x WOF strips or zillions of 3" x 12" segments (cut as you go)
- All fabric from your stash, we will make it work

Sewing Machine Required



Optional Kit for Mining Diamonds (From Your Stash), SH12-010Kit, \$31

The Polygon2 Tool is required for this workshop. Students who do not already have the tool can purchase it here: [click here](#).

QuiltFest Virtual Schoolhouse #12 Workshop Catalog

Candy Grisham

SH12-011 – Reimagined Dresdens

6-Hour Workshop - \$80

10 am – 4 pm EDT, Wednesday, October 15

Create your own, unique small wall hanging using the wedge ruler, making new, contemporary, and imaginative Dresden blocks. In class, we will cover the basic Dresden blocks and then some of the Dresden 201 blocks, which allow for creative piecing. Your choice. You can start with a background (Suggested 40 x 40") of your choice (pieced or solid) or wait until your blocks are made. It will be tons of creative fun and easy for all, from confident beginner up. Bring your willingness to be creative and step a little outside the box. You will have plenty of time to sew and view the videos.

Confident Beginner - Intermediate - Advanced Level.

Students to Provide

18-degree wedge ruler,

rotary cutting supplies,

sewing machine and basic sewing tools,

variety of fabric

6-8 fat quarter to half yard pieces of coordinating fabric. Bring some contrast too.

18" square Pellon 906F or light weight fusible,

12" square freezer paper,

point turner,

4 x 6" cardboard,

ironing ham for open seams (optional)

Dresden Quilt Blocks Reimagined (C & T Publ) suggested

Sewing Machine Required



QuiltFest Virtual Schoolhouse #12 Workshop Catalog

Candy Grisham

SH12-012 – Dresden Springtime

6-Hour Workshop - \$80

10 am – 4 pm EDT, Saturday,
October 18

These Dresden plates have always reminded me of flowers, or stars or fireworks but mostly flowers. In this class we will make just a few plates, learn some different edge and piecing techniques, explore colors and layout, learn to make bias stems and create our own

“gardens.” Ideal for making just a few. Use your favorite “flower” fabrics whether in prints or solids. Use a solid background or piece one. Applique by hand or by machine. Lots of choices but unique and fun. Create a stunning horizontal wall hanging using multiple types of Dresden edges and piecing. The “flowers” are laid out on a field of grass. This is an opportunity to make smaller “plates” and play with design with fabric and piecing.

Confident Beginner Level



Students to Provide

[Download Candy's supply list for specific cutting and fabric requirements - click here.](#)

You Tube [video](#) shows the supplies needed.

Sewing machine with ¼” foot

Dresden wedge ruler: 18 °Creative Grid is my preferred ruler.

Rotary cutter, mat, ruler to cut strips (4-6” x 12 or 18”)

Basic sewing supplies: pins, neutral thread, snips, point turner.

Freezer paper – (2) five” pieces

3 ½” circle template

Ironing ham for pressing seams open.

Fabrics:

A nice wide variety of ¼ to ½ yard cuts. Good contrast. Large prints, solids, small prints

Total of 10 plates require 10-14 pieces of fabric. More is fine. Refer to cutting directions.

½ yard fabric for stems and leaves

Pellon 906F ½ yard (light weight fusible interfacing – just one side fusible)

Steam a Seam 2 or your preferred two sided fusible – ½ yard.

Background measures 32x 44” but that is up to you. You can wait to get the background fabric, piece it now or use a solid piece.

Book: (optional but you are going to want it). Dresden Quilt Blocks Reimagined, C & T Publishing

Precutting Fabrics: Refer to the cutting chart and cut the strips. Label for blocks A-J. We will cut the wedges and construct the blocks in the workshop. [Download Candy's supply list for specific cutting and fabric requirements - click here.](#)

QuiltFest Virtual Schoolhouse #12 Workshop Catalog

Jane Haworth

SH12-013 – Rabbit & Lupine Fabric Collage

6-Hour Workshop - \$95

10 am – 4 pm EDT, Wednesday,
October 15

In this workshop we will work on two collage patterns; the rabbit and the lupine stalks.

This project is great for using up your scraps and the finished piece can be used in a bag, wall hanging or pillow. In class students will learn creative ways to make a background and free-motion quilting on collage.

All Levels

Students to Provide

- ½ yd of Pellon 830 (Easy Pattern) or similar foundation
- Variety of fabrics for the rabbit, small pieces work, solids, small patterns, batiks, blenders, etc., fabric scraps and small pieces of greens and purples for the flowers,
- Collage Supplies:
 - o scissors (I use KKB 6" perfect scissors)
 - o fabric glue (I use Alene's Original Tacky glue)
 - o Pencil, chalk marker or pencil or disappearing ink pen.
 - o Tweezers
 - o lightbox (optional)
- Pattern to be printed that will be emailed to students.



QuiltFest Virtual Schoolhouse #12 Workshop Catalog

Telene Jeffrey

SH12-014 – Rule It!

3-Hour Workshop - \$70

10 am – 1 pm EDT, Wednesday, October 15

Ruler work is the backbone to great custom free motion quilting and an essential skill for any free motion quilter. Students will learn the essentials about rulers, which ruler to start with, how to stabilize and handle them, how to do stitch-in-the-ditch and to utilize the markings on the rulers with little marking on fabric required. Best machine settings will be investigated. They will learn to do a few fill designs and to create a feature design.

Confident Beginner Level

Students to Provide

- White Chalk marking pen
- Blue water erasable marking pen
- Thread scissors • Bring a few of your rulers if you have any. If you don't have any rulers yet, don't buy yet until you've done the class to see what you would like to start with.
- Notebook and pen
- Quilt top, batting and backing fabric (pattern for top will be emailed separately prior to class)
- Thread
- Quilting Gloves
- 505 Temporary Adhesive Spray
- Sewing machine and accessories

NOTE: This class is applicable to longarm quilters too!

Sewing Machine Required



QuiltFest Virtual Schoolhouse #12 Workshop Catalog

Telene Jeffrey

SH12-015 – Upcycled Jeans Bag

3-Hour Workshop - \$70

10 am – 1 pm EDT, Thursday, October 16

Upcycling is a wonderful way to create a new item or gift without having to buy a lot of new fabrics. Students will upcycle a pair of jeans to make a useful tote bag with fun raw edge applique and free motion quilting all in one. Once done, students only have to close up the sides and finish the top edge with binding. Great gifts and usable items that can be personalized without breaking the bank.

Confident Beginner Level



Students to Provide

- White Chalk marking pen
- Blue water erasable marking pen
- Thread scissors
- Fabric scissors
- Notebook and pen
- 505 Temporary Adhesive Glue Stick
- Fat quarter approximately of large print fabric – think Kaffe, Tula, Anna Maria Horner, etc.
- 40wt Polyester thread to match with fabric print
- Cutup jeans pieces, a video will be sent before class showing how and where to cut the jeans.
- Sewing machine and accessories

NOTE: This class is applicable to longarm quilters too!

Sewing Machine Required

QuiltFest Virtual Schoolhouse #12 Workshop Catalog

Julia McLeod

SH12-016 – Starting with Silk

6-Hour Workshop - \$105

12 pm – 6 pm EDT, Wednesday, October 15

In this 6-hour workshop, you will learn how to use silk fabrics in your quilt-making. We will -

- Identify silk fabrics and distinguish them from those made with other fibers
- Discuss fusible stabilizers and how to use them
- Learn an improvisational crazy-piecing method
- Learn fabric foundation piecing. We will draft our own simple muslin foundations
- Please watch my YouTube videos: 'How to Deconstruct a Necktie' and 'Applying Fusible Interfacing'. Links are available on my website juliamcleodquilts.com



[Click here for Julia's workshop description and supply list.](#)

Students to Provide

- This class can be completed using about 10 neckties. Other silks from scarves, furnishings, and clothing are also suitable. Avoid super sheer silk chiffon.
- For the background of the Flying Geese; about 1/4 yd of plain, contrasting fabric; silk dupioni or quilters cotton.
- 1 or 2 yds lightweight iron-on fusible interfacing. Good lightweight choices are Pellon's P44F, 906F and SF101 or Quilters Select Fabric Prep
- 4 pieces lightweight pre-washed cotton muslin 6" x 10"
- Sewing machine, cord and pedal, bobbins
- Thread in a neutral color
- Scissors, thread snips and seam ripper
- Rotary cutter with a good blade
- Cutting mat and ruler
- Iron and ironing surface
- Pins
- Regular presser foot or walking foot.
- Notebook/Sketchbook and pen/pencil

Sewing Machine Required

Questions? Contact Julia at juliamcleodquilts@gmail.com

QuiltFest Virtual Schoolhouse #12 Workshop Catalog

Julia McLeod

SH12-017 – Sheer Delight

3-Hour Workshop - \$70

12 pm – 3 pm EDT, Thursday, October 16

Layer sheer chiffon and organza over more robust cotton, trapping and cutting away layers to create intriguing and unique textiles. In this class, we will explore varied combinations of color, pattern, and texture. Use the techniques you learn to create a wall hanging or art quilt.

All Levels

[Click here to download Julia's workshop supply list.](#)



Students to Provide

Gather what fabrics you have and make choices during the workshop.

- A selection of sheer, printed fabrics* -polyester or silk chiffon, organza, etc, sheer cotton lawn or very lightweight silks. At minimum, you should have 4 sheer fabrics (two dark, two light) - cut two pieces of each fabric, roughly 12" x 18".

(*Have fun in a thrift shop finding sheer blouses, dresses, scarves etc)

- A selection of high contrast printed quilting cottons, or shirt-weight fabrics. Black and white prints are best for a first project. You're welcome to explore colored prints too. At minimum, 8 pieces at least 12" x 18".

- Objects that could be trapped between layers of sheers and cottons: Deconstructed artificial flowers, lace etc.

- Some means of fusing fabrics together: I like Quilter's Select 'Free Fuse' basting powder or Bo-Nash Fuse It Powder. At in person classes, I will provide this for your use. In Zoom classes, please purchase your own. Other adhesives include spray baste; I like Odif's 505 Temporary Adhesive for Fabric

- Silicone/Teflon pressing sheet or cotton pressing cloth
- Dryer sheet - having one on hand is helpful to clean the sole-plate of your iron.
- Sewing machine w/ regular foot; cord and pedal, bobbins
- Thread in a neutral color
- Scissors, thread snips and seam ripper
- Rotary cutter with a good blade
- Cutting mat and ruler
- Iron and ironing surface
- Pins
- Notebook/Sketchbook and pen/pencil

Optional extras: Free motion foot, embroidery threads and needle, batting scraps

Sewing Machine Required

Questions? Email Julia at juliamcleodquilts@gmail.com

Mary Nesnay

SH12-018 – Halloween Patchwork Pillow (ITH)

3-Hour Workshop - \$70

12 pm – 3 pm EDT, Friday, October 17

SH12-018Kit – Optional Kit (\$40)

Embroider this spooky Halloween patchwork pillow. We will discuss the following techniques: floating fabrics in the hoop, using specialty threads (glow-in-the-dark and metallic threads), pathing when digitizing in-the-hoop projects, piecing multiple blocks of fabric together with correct registration, attaching invisible zippers, sewing an embroidered pillowcase, and how to use files of one project for another project. When completed, this project will fit an 18" pillow. This project is quite versatile and will allow you to use the embroidery files for other projects. End of the project will require completion on your sewing machine. *Project may not be completed by end of class. A video tutorial link will be included for viewing after event.

All Levels

***Students must purchase an embroidery pattern file for this class (\$11.99): [click here to purchase](#).**

***Optional project kits are also available** for \$40 (files and shipping included) - [click here to purchase](#). *If you purchase a kit, you do **not** need to purchase the pattern files.*



Students to Provide

- Embroidery machine with embroidery attachment arm and embroidery foot.
Preferred hoop size: 4"x4" or larger
- USB Stick
- Embroidery pattern file - purchase here:
<https://starspangledheart.com/shop/patchwork-pillow-halloween-pattern-only>
- 3 yards - Tear Away Stabilizer (16 hoopings on 4x4" hoop, 4-8 hoopings on a larger hoop)
- Fabric Scissors
- Clips or pins
- Tape (Scotch or Painter's)
- 75/11 Embroidery Needles
- 60 wt. **WHITE** Embroidery Bobbin (Need white and black bobbin)
- 60 wt. **BLACK** Embroidery Bobbin (Need white and black bobbin)

QuiltFest Virtual Schoolhouse #12 Workshop Catalog

(continued)

Mary Nesnay

SH12-018 – Halloween Patchwork Pillow (ITH)

- 40 wt. Embroidery Thread
 - A.) White
 - B.) Black
 - C.) Halloween Purple
 - D.) Monster Green
 - E.) Neon/Halloween Green
 - F.) Gold (metallic or regular)
 - G.) Silver (metallic or regular)
 - H.) Yellow
 - I.) Cream or Ivory
 - J.) Light Gray
 - K.) Med. Gray
 - L.) Dark Gray
 - M.) Brown
 - N.) Orange
 - O.) Glow-in-the-dark thread (*Optional)
- 1 yard Halloween themed Cotton fabric
- 1/2 yard White Cotton or Duck Cloth
- 1/2 yard Black Cotton or Duck Cloth
- 1/2 yard Orange Cotton or Duck Cloth
- 1/2 yard Purple Cotton or Duck Cloth
- *Optional: 2 yards - Pellon SF 101 Fusible Interfacing (Attached to cotton fabrics for more stability)
- #3 Black **Invisible** Zipper - 16" length
- 18" pillow

If you purchase a kit, the following is included:

- USB Stick
- Embroidery design/pattern files
- .PDF instructions of workshop
- All fabrics (front patchwork pieces and back lining)
- #3 Black Invisible Zipper

* All kits **exclude**: tear away stabilizer, threads, bobbin, 75/11 needles, Pellon SF 101, and 18" pillow insert.

Embroidery Machine Required

SH12-018Kit – Optional Kit (\$40) for Halloween Patchwork Pillow (ITH)

Optional project kits are also available for \$40 (files and shipping included) - [click here to purchase](#). *If you purchase a kit, you do not need to purchase the pattern files.*

Please note: Kits will only be mailed within the continental United States.

QuiltFest Virtual Schoolhouse #12 Workshop Catalog

Mary Nesnay

SH12-019 – Embroidered Needle Case (ITH)

3-Hour Workshop - \$70

4 pm – 7 pm EDT, Friday, October 17

SH12-019Kit – Optional Kit (\$40)

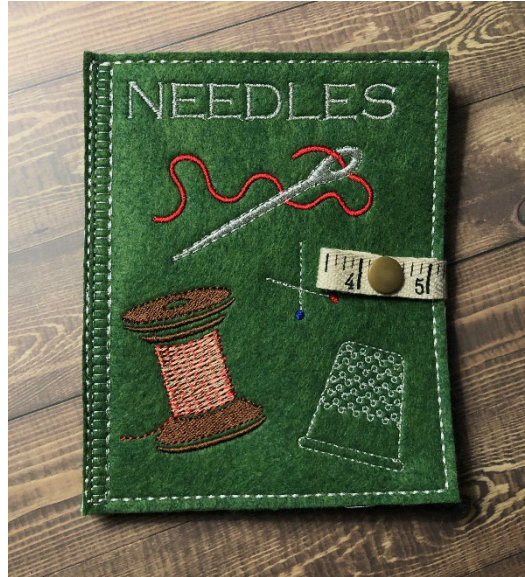
Create an ITH (in-the-hoop) needlecase holder. Perfect for sorting all your loose needles in between various projects. Learn the following techniques: applique, attaching hidden snaps, pathing when digitizing to in-the-hoop projects, and piecing multiple layers of fabric together with correct registration. When completed, this project measures 5" w x 6" h.

Project may not be completed by end of class. A video tutorial link will be included for viewing after event.

All Levels

***Students must purchase an embroidery pattern file for this class (\$7.99): [click here to purchase](#).**

***Optional project kits are also available** for \$40 (files and shipping included) - [click here to purchase](#). *If you purchase a kit, you do **not** need to purchase the pattern files.*



Students to Provide

- Embroidery machine with embroidery attachment arm and embroidery foot.
Preferred hoop size: 5"x7" or larger
- USB Stick
- Embroidery pattern file - purchase here:
<https://starspangledheart.com/shop/needle-holder-case-bag-pattern-only/>
- 1 yard - Tear Away Stabilizer (enough for 4 hoopings)
- 1 Hooping of Ultra Solvy water soluble stabilizer
- Fabric Scissors
- Applique Scissors (*Optional)
- Tape (Scotch or Painter's)
- *Kam Snap tool -- found here: <https://www.amazon.com/KAM-Snaps-Starter-Kit-Fastener> (*Optional - You will need this tool if applying snaps to needle case)
- 75/11 Embroidery Needles
- 60 wt. White Embroidery Bobbin
- 40 wt. Embroidery Thread
 - A.) White
 - B.) Black
 - C.) Silver
 - D.) Green
 - E.) Red

QuiltFest Virtual Schoolhouse #12 Workshop Catalog

(continued)

Mary Nesnay

SH12-019 – Embroidered Needle Case (ITH)

F.) Blue

G.) Light Brown

H.) Brown

- 1 yd – Felt (your choice of color)
- 1/2 yd – Sewing themed cotton fabric – should complement your felt color
- 1 set of Snaps XL Size 20
- 1/2” Ribbon - 12” length

If you purchase a kit, the following is included:

- USB Stick
- Embroidery design/pattern files
- .PDF instructions of workshop
- All fabrics (red felt and lining pieces)
- 1 Sheet water soluble stabilizer
- Snaps
- Ruler Ribbon

* All kits exclude: tear away stabilizer, threads, bobbin, and 75/11 needles.

*Fabrics in kits may not match photo, as they may no longer be manufactured at time of class. A similar substitute may be used.

Embroidery Machine Required

SH12-019Kit – Optional kit for Embroidered Needle Case (ITH), \$40

Project kits are also available for \$40 (files and shipping included). [Click here](#) to purchase the optional workshop kit. *If you purchase a kit, you do **not** need to purchase the pattern files.*

Please note: Kits will only be mailed within the continental United States.

QuiltFest Virtual Schoolhouse #12 Workshop Catalog

Mary Nesnay

SH12-020 – Christmas Advent Calendar (ITH)

6-Hour Workshop - \$110

12 pm – 6 pm EDT, Saturday, October 18

SH12-020Kit – Optional Kit (\$45)

A perfect way to start the holiday season! Create this Charles Dickens inspired Christmas Carol Advent Calendar. We will discuss the following topics: ith projects, floating fabrics, adding fabrics to the underside of the hoop, proper registration, adding individual pockets, creating multiple panels, sewing button holes, using metallic and glow-in-the-dark threads correctly, using different types of stabilizers, multi-hooping for smaller hoops, embroidering projects with multiple hoopings, how to finish ith designs, and streamlining your workflow. Finished wall hanging will measure 7" w x 36" h (including hanging ribbon).

Panels measure just under: 7" x 10". Pockets: 2" x 2.25".

*Finishing the project may require completion on your sewing machine (dependent upon hoop size).

*Project may not be completed by end of class. A tutorial video will be included for viewing after event.

All Levels

***Students must purchase an embroidery pattern file for this class (\$11.99): [click here](#).**

***Project kits are also available for \$45** (files and shipping included). To purchase the project kit, [click here](#). *If you purchase a kit, you do not need to purchase the pattern files.*

***Important Note about Hoop Sizes:** You can use a 4x4" for the individual pockets or a larger hoop and sew multiple pockets out at the same time. The panels are setup for 8"x8" or larger hoops. If you are using a 5" x 7" or 4" x 4" hoop for the panels, you will need to "multi-hoop" your panels or finish the panels on your sewing machine.

Students to Provide

- Embroidery machine with embroidery attachment arm and embroidery foot
Preferred hoop size: 5"x7" or larger (smaller hoop = smaller project)
- USB Stick
- Embroidery pattern file - purchase here:
<https://starspangledheart.com/shop/a-christmas-carol-advent-calendar-pattern-only>
- 3 yards - Tear Away Stabilizer (24 hoopings on 4x4" hoop, less hoopings on larger hoops – 5"x7" hoop will be 4 to 6 total hoopings, larger hoops will be even less)
- 2 yards Wash Away Stabilizer (4 hoopings on a large hoop)
- Fabric Scissors
- Applique Scissors



QuiltFest Virtual Schoolhouse #12 Workshop Catalog

(continued)

SH12-020 – Christmas Advent Calendar (ITH)

- Tape (Painter's or Scotch)
- Seam Ripper
- 75/11 Embroidery Needles
- 60 wt. WHITE Embroidery Bobbin (*Need both white and black bobbin)
- 60 wt. BLACK Embroidery Bobbin (*Need both white and black bobbin)
- 40 wt. Embroidery Thread:

A.) White

B.) Black

C.) Silver (Metallic or regular)

D.) Gold (Metallic or regular)

E.) Med. Green

F.) Forest Green (Dark)

G.) Red

H.) Light Brown

I.) Tan Brown / Golden Tan

J.) Brown

K.) Flesh

L.) Yellow

M.) Orange

N.) Blue

O.) Med. Gray

P.) Purple

Q.) Glow-in-the-dark thread (*Optional – Marley's chains)

*These are the colors used in the project. If you like, you can substitute colors.

- 2 yards - White or Antique White Felt
- 5/8" Christmas Ribbon – 2 yards

If you purchase a kit, the following is included:

- USB Stick
- Embroidery design/pattern files
- .PDF instructions of workshop
- Cutting Pattern Sheets for Hoops
- All project fabrics
- Ribbon

* All kits exclude: all stabilizers, threads, bobbin, and 75/11 needles.

Embroidery Machine Required

SH12-020Kit - Optional kit for: Christmas Advent Calendar (ITH), \$45

Project kits are also available for \$45 (files and shipping included). [Click here](#) to purchase the optional workshop kit. *If you purchase a kit, you do **not** need to purchase the pattern files.*

Please note: Kits will only be mailed within the continental United States.

QuiltFest Virtual Schoolhouse #12 Workshop Catalog

Emma Jane Powell

SH12-021 – Playful Palettes: Exploring Color with Your Fabric Stash

3-Hour Workshop - \$70

12 pm – 3 pm EDT, Wednesday, October 15

Do you feel lost trying to make sense of your fabric stash or scraps? Spend an inspiring afternoon exploring the possibilities in your very own stash! Moving beyond the traditional color wheel, I'll introduce you to a variety of tools and sources of inspiration to plan bold, unexpected color palettes confidently - without investing in more fabric. Build a personalized portfolio of fabric combinations from your existing stash to kickstart your future quilting projects.

All Levels

Students to Provide

- Your very own fabric stash!
- PDF downloadable portfolio to print and compile in a binder with fabric samples. It is recommended to print on thicker paper, like cardstock. Will be emailed to workshop participants.
- Inspirational color photos from fashion and home decor magazines, record album covers, paint sample cards, artwork and paintings in your very home, selvages, etc.
- Fabric scissors for cutting small samples of fabrics from your stash
- Glue sticks for adhering fabric samples to portfolio pages.



QuiltFest Virtual Schoolhouse #12 Workshop Catalog

Emma Jane Powell

SH12-022 – Improv: A River Runs through It

3-Hour Workshop - \$70

12 pm - 3 pm EDT, Thursday, October 16

Improvisationally curious? Explore the fun of ignoring traditional piecing rules in a structured way by mimicking this piece. Skills taught will include: color & fabric combinations, straight lines, wonky piecing, gentle curves, and putting together segments. No bigger than a cafeteria tray, this project is designed to be finished quickly. You will finish this class with a toolbox full of techniques to create more expressive, spontaneous work in the future.

All Levels



Students to Provide

- Large and small fabric scraps needed in earthy and cool tones. You may want to limit it to a print you like, two complimentary colors, one contrasting color and a neutral.
- Fat quarter for backing and same size batting piece.
- Rotary cutter & mat (rotating mat is helpful).
- Rotary rulers, large and small, and a square one is helpful. Recommended ruler sizes are 6"x24", 5"x8", and 6" square; however, it is encouraged to use what you have and not buy new supplies for the class.
- Coordinating machine piecing threads.
- Perle cotton size 8 in coordinating colors, hand sewing scissors, hand sewing needle size 5. (Clover brand recommended due to eye size.)

QuiltFest Virtual Schoolhouse #12 Workshop Catalog

Linda Schmidt

SH12-023 – Miniature

Landscapes 101

6-Hour Workshop - \$90

10 am – 4 pm EDT, Friday, October 17

This class is a great class to begin to be an art quilter! You will experience a wide variety of construction and embellishment techniques including fabric painting, string piecing, invisible machine appliqué, soft edge appliqué by machine and by hand,

free motion machine embroidery, and use Solvy to make trees and thread appliqués and fabric. You will also learn how to create the illusion of depth and how to work from a photograph to create your own landscape masterpieces while creating a small piece of art. Come play with me, and see my website for more pictures

– www.ShortAttentionSpanQuilting.com.

All Levels

Students to Provide

- An 8-1/2" x 11" piece of PDF (Prepared for Dyeing) fabric OR a piece of finely woven white cotton fabric (like a sheet) that has been washed and dried a couple of times so a drop of water flicked at it is absorbed instead of beading up on it.
- Fabric paint (blue, pink, lavender, etc.) to paint a sky. I use Pebeo Setacolors and/or Jacquard fabric paints (available from Dharma Trading or Amazon) or Golden fluid acrylics (from Michael's or Hobby Lobby); use whatever fabric paint you have as long as you can dilute it with water. DO get some pearlescent white if at all possible to give your sky an underlying shimmer (From Setacolor or Jacquard).
- White plastic garbage bag for painting on
- 1/2" wide paintbrush
- Small palette or empty plastic egg carton
- One plastic page protector or fairly stiff, smooth plastic to paint on
- Apron
- Landscape Fabric - Small pieces of tie-dyed or hand dyed and/or batik fabrics for water, grass, hills, mountains, foliage, flowers, etc, NOT calicos. Be sure you have a good range from very light to very dark. You only need 7 pieces total. See the samples on the miniatures page of my website: www.ShortAttentionSpanQuilting.com
- One piece sheer white or transparent fabric 12" wide by 6" tall, can be lightly tinted (for reflections in water)
- One package of Solvy – can be regular or Super Solvy, NOT Ultra Solvy



QuiltFest Virtual Schoolhouse #12 Workshop Catalog

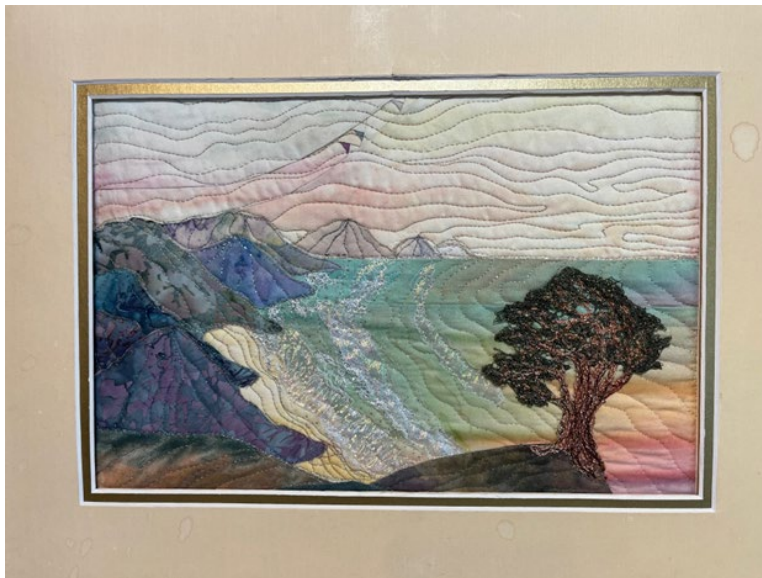
(continued)

Linda Schmidt

SH12-023 – Miniature Landscapes 101

- One package Totally Stable – available at Amazon and sewing machine stores.
- Glue Stick
- Scotch Tape
- 1 piece 8-1/2" x 11" tracing paper (the kind you see through to trace)
- 1 piece 8-1/2" x 11" freezer paper
- Embroidery hoop about 6-8" in diameter or so that will fit under your darning foot
- Ultra Fine Sharpie marker
- Thread – green or autumn colors to sew leaves, brown or black for trunk.
- “Wonder” invisible thread (.004 diameter)
- Neutral regular thread for bobbin
- Sewing machine, cord, foot pedal and feet, including regular, open toe & darning foot for your machine, as well as an extra bobbin case to be set for heavy threads and extra bobbins.
- Scissors for paper and fabric
- Small rotary cutter, board and ruler
- Pins, seam ripper, stiletto or long tweezers
- Matches, a tall (taper) candle and candle holder
- Small flat pan that will hold water (pie tin?)
- Iron & ironing surface (optional)
- Spray starch or sizing

Sewing Machine Required



QuiltFest Virtual Schoolhouse #12 Workshop Catalog

Linda Schmidt

SH12-024 – Creating Landscapes with Cool Stuff

6-Hour Workshop - \$115 (includes \$25 class kit)

12 pm – 6 pm EDT, Saturday, October 18

This is a hands-on virtual workshop where you will create a small landscape using MistyFuse, metallic paint powders, Lutradur, Puff Paint, Tyvek, fabric paints, iridescent cracked ice, painted melted cellophane and sheer fabrics, roving, Angelina fibers, and more. You will come away with a small, landscape art piece, pinned and ready to sew, and lots of inspiration for new projects. Come and see what you can create as you experiment with cool stuff that will enable you to create waterfalls, trees, streams, and change photos into art quilts!

All Levels

The workshop fee includes the \$25 class kit. The Class Kit includes full instructions and pattern, Puff Painted tree and rocks, Tyvek, iridescent cracked ice, roving, Misty Fuse, Lutradur, Totally Stable, Angelina fiber, cellophane, sample sheer fabrics plus shipping and handling.

Students to Provide

Fabrics:

- 1) One piece or fat quarter of dark sky fabric – hand dyed, batik, painted, or just convincing as a dark sky
- 2) One small piece of printed flowers you can fussy cut wildflowers or greenery (you just need a couple of inches of this)
- 3) A total of a square foot of 3-5 sheer white or clear transparent fabrics such as white sparkle organza, white shimmer perle or opalescent organdie to supplement what I send.
- 4) A total of a square foot of blue or white or blue and white cotton fabric to underlay the sheers to create a stream.

Other stuff - required:

- One bottle of white Tulip Puffy paint (available at Wal-Mart or Wal-Mart.com) or other online places. It has to say “expands with heat” on the bottle. Do NOT get Tulip Puff Paint, as that is basically a 3-D paint that does not expand. Ask me how I know (and would you like some?).
- Whatever fabric paint you have (I use Setacolor or Jacquard available from Dharma Trading) in dark brown, Sienna brown, & metallic gold (or whatever color you want your rocks and tree trunk painted) plus perlescent white.
- Fine iridescent glitter
- Glue stick
- A sheet of Lite Steam a Seam II (available at most quilt shops, the Warm Company and Amazon)



QuiltFest Virtual Schoolhouse #12 Workshop Catalog

(continued)

Linda Schmidt

SH12-024 – Creating Landscapes with Cool Stuff

- Tracing paper (the kind you see through to trace designs), 8-1/2" x 11"
- Freezer paper, 11" x 14"
- Scotch tape
- Lots of glass headed straight pins
- Ultra fine line permanent Sharpie marker
- 5-6 small plastic cups for paint & water
- 3-5 small to medium paintbrushes, fan brush if you have one
- Apron
- White plastic garbage bag for painting on
- Olfa cutter, small cutting board, ruler
- Flat metal cookie sheet
- Parchment paper or release sheets from Lite Steam a Seam II
- Paper & Fabric Scissors, including sharp embroidery scissors
- Heat gun (craft type, NOT industrial type) (available at Michael's – do NOT get the Martha Stewart one- it doesn't get hot enough. Ask me how I know.)
- Size 80 Topstitching needles
- Wonder Invisible Thread
- Sewing machine that can zigzag
- Wood burning tool (optional) (Available at Michael's)

Sewing Machine that can Zigzag Required

QuiltFest Virtual Schoolhouse #12 Workshop Catalog

Alessandra Volker

SH12-025 – Vibrant Giraffe

6-Hour Workshop - \$105

10 am – 4 pm EDT, Wednesday, October 15

In this workshop, students will learn how to create a striking, lifelike giraffe bursting with color and personality using Derwent Inktense pencils and posca markers on fabric. Through step-by-step guidance, you'll explore how to blend bold colors seamlessly, add dimension to your giraffe's features, and highlight textures that bring your artwork to life.

By the end of the session, you'll know how to use color layering and water activation techniques to achieve stunning, high-contrast results that make your giraffe stand out.

All Levels

Students to Provide

- Derwent Inktense pencils (focus on a vibrant, colorful palette), box of 24 colors or more
- Prepare your own color pallet on a scrap, with all the Inktense pencils you have.
- White posca marker (PC-1MR and PC-3M)
- Fabric eraser (Bohin, Dritz) or Derwent eraser for Inktense
- Sharpener (Kum - the red or the blue one)
- Water cup
- Paper towel to prevent excess water
- Firm taklon brushes flat # 2,4 and round brush #_0
- Apron or old clothing
- Battery powered Light box
- Notebook for personal notes
- Fabric: Calico / muslin or something similar and heavier. A fabric with a higher GSM is better. (mine is 374 GSM)- Enthusiasm and curiosity!
- Iron



QuiltFest Virtual Schoolhouse #12 Workshop Catalog

Alessandra Volker

SH12-026 – Rainbow Whiskers: A Canine's Joyful Palette

6-Hour Workshop - \$105

10 am – 4 pm EDT, Thursday, October 16

The aim of this Posca Marker Workshop is to inspire and empower participants to explore their creativity by mastering techniques for vibrant, expressive artwork. Whether through bold strokes or intricate details, attendees will learn to transform ideas into colorful masterpieces while gaining confidence in their artistic skills.

All Levels



Students to Provide

- Posca markers PC-3M in various colors (blues, purples, oranges, yellows, reds, greens, whites, browns, and black)
- 1 white posca PC-1MR and 1 black posca PC-1MR
- Derwent InkTense outliner #2400 -Sharpener and eraser
- Water cup
- Kitchen Paper towel to prevent excess water
- Firm taklon brushes (flat #2,4 and round #0) and (Derwent) water brushes (if you have any)
- Apron or old clothing
- Teflon mat -Iron
- fabric: Calico/muslin or something similar and heavier. A fabric with a higher GSM is better. (mine is 374 GSM)
- Battery-powered Light box
- Notebook for personal notes

QuiltFest Virtual Schoolhouse #12 Workshop Catalog

Geraldine Wilkins

SH12-027 – Tulip Bouquet: Free Style Free Motion

3-Hour Workshop - \$60

4 pm – 7 pm EDT, Wednesday, October 15

Before class, purchase the \$15 required workshop kit from

<https://courses.livingwaterquilter.com/courses/fmq-machine-setup>. Use Coupon Code: Schoolhouse 12. The kit includes the Free Motion Machine Setup Video Tutorial.

Let's stitch a beautiful bouquet of tulips with free motion embroidery. Learn free motion quilting techniques that "look" like automated machine embroidery. Learn how to use different thread weights to get the right textures and accents. These beginner's techniques create a pro finish.

Confident Beginner Level

[Click here to download Geraldine's supply list.](#)

Students to Provide

Small notebook for class notes, tips and techniques

White board with both a blank and ruled side

Fine point Dry Erase marker

Pellon 809 Decor Bond one-side fusible Stabilizer

Clear 11 x 14 Plexiglass sheet available at Home

Depot or Lowes

Duct Tape - Place strips around the perimeter of the plexiglass.

Customary free motion quilting tools - free motion quilting foot, quilting thread, gloves, iron-off fabric marking tool, top-stitch needles, and glider or slider.

A sewing machine capable of free motion quilting

Tulip fabric panel. Available here:

Natural: https://www.quiltingstencils.com/Tulip-Bouquet--Natural_p_1552.htm

White: https://www.quiltingstencils.com/Tulip-Bouquet--White-165_p_1590.html



Required Preparation, Practice Quilt Sandwiches:

Cotton fabric - Cut five 12 x 10-inch pieces of solid, medium fabric

Cotton batting - Cut five 14 x 12-inch pieces of low/medium loft

Muslin for backing - Cut five 14 x 12-inch pieces

Backing fabric for Tulip Panel:

One low/medium loft cotton batting at least 18 x 18 inches

One backing fabric at least 18 x 18-inches

QuiltFest Virtual Schoolhouse #12 Workshop Catalog

(continued)

Geraldine Wilkins

SH12-027 – Tulip Bouquet: Free Style Free Motion

Required Kit \$15.00

Free motion machine setup video tutorial

<https://courses.livingwaterquilter.com/courses/fmq-machine-setup>

Domestic and long arm machine setup & settings

Tool recommendations

Tension testing

Stitch control

Machine speed

Sewing Machine Capable of Free Motion Quilting Required



QuiltFest Virtual Schoolhouse #12 Workshop Catalog

Geraldine Wilkins

SH12-028 – Beginner Ruler Quilting Designs: Grids & Frames

3-Hour Workshop - \$60

4 pm – 7 pm EDT, Saturday, October 18

Learn beginner-friendly ruler-based straight line designs that can be used on almost any quilting project. Learn the power of using one ruler to create many designs. You'll be able to apply the skills you learn to other quilting rulers with confidence.

All Levels

Before class, purchase the \$35 required workshop kit. The kit includes Pinwheel Fabric Panel - Two 12 X 12 inch; Ruler quilting pattern sheets; Ruler quilting machine setup video tutorial ([Free Motion Machine Setup For Success](#)) that includes info for domestic and longarm machines, machine setup and settings, tool recommendations, tension testing, stitch control, machine speed and thread troubleshooting. Contact Geraldine to order: info@livingwaterquilter.com.



Students to Provide

Westalee Design Spacing Gauge

A sewing machine capable of free motion quilting

Ruler foot for your sewing machine

Sew Steady Free Motion Glider or Supreme Slider

Marking ruler - 12.5 inches x 3.5 inches

Fine marking tool - Mechanical Pencil or chalk roller

Quilting Gloves - Machingers

Quilter's Rule Mini Straight Line acrylic ruler

Quilting Ruler:

Don't know which ruler thickness to purchase? Use this guide.

https://courses.livingwaterquilter.com/9811/files/6812cc74be871_1746062452_shank-size-guide-aug-24.pdf

Mini Straight Line Tool 6 1/2 - HMQT-MSLT 3/16 - High Shank

<https://quiltersrule.com/individual-product.php?id=580&tier=retail&category=560>

Medium Straight Line Tool 10" - MQT-MSLT-M 1/8 Low Shank

<https://quiltersrule.com/individual-product.php?id=1000442&tier=retail&category=4>

Mini Straight Line Tool - 10 3/4 - MQT-MSLT - 1/4 Inch Long Arm

<https://quiltersrule.com/individual-product.php?id=313&tier=retail&category=21>

QuiltFest Virtual Schoolhouse #12 Workshop Catalog

(continued)

Geraldine Wilkins

SH12-028 – Beginner Ruler Quilting Designs: Grids & Frames

Workshop Preparation

Preparation – Wash, starch and press all fabric. Make 8 practice quilt sandwiches to practice stitching templates. Baste lightly with basting spray or use fusible batting. Pin basting will be problematic for ruler quilting.

Cotton fabric – Cut Six 8.5 x 8.5-inch pieces of solid, medium to dark fabric

Batting – Cut Six 10.5 x 10.5 inches pieces of low/medium loft batting

Muslin for backing – Cut Six 10.5 x 10.5-inches pieces

Mark –With a thin permanent marker, (an ink pen will work) mark each 8.5 x 8.5 fabric with a 6-inch square. NOTE: for best results mark fabric before making the quilt sandwich.

****The inner square MUST be 6-inches.

Backing Fabric for Kit Panel: Cut One 14 x 14 inch fabric square

Required Kit \$35

Pinwheel Fabric Panel - Two 12 X 12 inch

Ruler quilting pattern sheets

Ruler quilting machine setup video tutorial: [Free Motion Machine Setup For Success](#)

Domestic and long arm machines

Machine setup & settings

Tool recommendations

Tension testing

Stitch control

Machine speed

Thread Troubleshooting

Sewing Machine Capable of Free Motion Quilting Required