

QuiltFest Virtual Summer Schoolhouse Workshop Catalog

PATRICIA BELYEA

SS-001 – Dancing Xs

6-Hour Workshop - \$105

12 pm - 6 pm EDT, Thursday, June 25

In the Dancing Xs Workshop, you will learn Patricia Belyea's signature Inserted Curves technique to make a lyrical quilt composition full of curves! You will start by inserting two intersecting curved lines into a 12-inch square of fabric—no templates required. For this block, you will design your own curves and sew them, so they lie perfectly flat to create movement and energy in your design. To continue, you will make six blocks in one color combination and six blocks in another, then arrange them into a striking checkerboard configuration. The finished quilt, measuring approximately 33" W x 44" H, works beautifully as a comfort quilt. Through Patricia's clear, step-by-step teaching style, you will be guided to stretch your creative muscles while building confidence with curved piecing. You will gain practical construction skills, design insight, and a fresh approach to working with curves that you can apply to future quilts.



All Levels

Students to Provide

- Sewing gear—such as thread, ripper, etc.
- Sewing machine and accessories
- Fine pins (highly recommend Clover Fine Patchwork Pins #2507)
- Good fabric scissors
- Paper scissors
- Cutting tools— small cutting mat, gridded ruler, rotary cutter
- Drawing pencil and a good eraser
- 2 yd of freezer paper — no folds in paper is best.
- Two background fabrics, with large motifs that play well together — 1 yd each.
- Two contemporary solids that contrast and complement the background fabrics — 3/4 yd each.

Sewing Machine Required

QuiltFest Virtual Summer Schoolhouse Workshop Catalog

LYNN CHRISTIANSEN

SS-002 – Ozzie Cardinal Collage

3-Hour Workshop - \$70

12 pm - 3 pm EDT, Wednesday, June 24

The workshop fee includes the \$14 class kit. The **Class Kit** includes an emailed digital pdf of the pattern with full instructions and the cardinal template that will need to be printed before class. **Please note: Digital kits can be emailed worldwide.**



Create a vibrant cardinal full of personality in this fun and creative collage class! You'll learn the fundamentals of collage quilting, including how to use fusible web for assembling fabric pieces, techniques for layering to add depth and texture, and best practices for successful fabric collage. This striking project features a bold cardinal perched on a winter branch, perfect for adding charm to your home or gifting to a fellow bird lover.

You will learn:

The fundamentals of collage quilting technique.

How to choose and prepare fabrics for a successful collage quilt.

Fussy cutting techniques to create detailed and intricate fabric shapes.

Layering fabrics to build depth and texture in the design.

How to use fusible web to assemble fabric pieces effectively.

Best practices for quilting to create a polished, professional-looking collage quilt.

All Levels

Students to Provide

Cardinal Template (Printed from Digital PDF)

Fabrics:

*6-10 reds for cardinal

*1 orange for beak

*Fabric with circles for eye

*1 brown for legs

*1 black for face

*1 brown for branch

*Motifs to go around the cardinal

*15"x15" background fabric

QuiltFest Virtual Summer Schoolhouse Workshop Catalog

CONTINUED: SS-002 – Ozzie Cardinal Collage

*Rotary Cutter, Ruler, and Mat

*#2 Pencil

*Karen K. Buckley Medium Perfect Scissors 6" (blue handle)

*Or any type of small sharp scissors

*Silicone Precision Fusing Mat (12"x12" or larger)

*Steam a Seam 2 (NOT LITE)- 1 ½ Yards or 1 pack of 9"x12" sheets

QuiltFest Virtual Summer Schoolhouse Workshop Catalog

LYNN CHRISTIANSEN

SS-003 – Wooly Flourishes

3-Hour Workshop - \$85

12 pm - 3 pm EDT, Thursday, June 25

The workshop fee includes the \$28 class kit. The **Class Kit** includes instructions, templates, wool, needle, threads, and pattern. **Please note: Physical kits can only be mailed within the continental United States.**



Bring your stitching to life in the Wooly Flourishes Workshop, a hands-on class where you'll create one of my playful wool appliqué designs from your choice of kit. Whether you pick a mischievous raccoon, an upside-down opossum, the legendary Sasquatch, or even the Loch Ness Monster, you'll spend the session crafting a small, personality-packed piece that's as fun to stitch as it is to show off.

Using the Wooly Flourish kit of your choice, you'll learn how to layer wool shapes, add simple hand-stitched details, and secure everything neatly for a polished finish. Your completed design can be added to a jacket, jeans, tote bag, or turned into a stand-alone ornament or keychain—perfect for gifts or everyday whimsy.



Whether you're drawn to cute woodland "trash collectors" or mythical cryptids, this workshop gives you everything you need to leave with a finished project and the skills to make more. It's simple, creative, and guaranteed to make you smile while you stitch.

All Levels

Students to Provide

- Wooly Flourishes Kit: You only need one kit from the following collections: Trash Collectors (Raccoon, Opossum, Skunk, Trash Can) or Cryptids (Sasquatch, Yeti, Loch Ness, Moth Man)
- Optional: Item to sew Wooly Flourish to (This could include jeans, jackets, bags, or just plain fabric if you don't know what you want to sew it to. NOTE: You don't need this if you want to make your Wooly Flourish into an ornament or keychain.)
- Roxanne's Glue Baste-it or small pins.
- Scissors

QuiltFest Virtual Summer Schoolhouse Workshop Catalog

CAROL W CLANTON

SS-004 – Vintage Poppy Made New

3-Hour Workshop - \$65

12 pm - 3 pm EDT, Thursday, June 25

The workshop fee includes the \$10 class kit.

The Class Kit includes the emailed digital pattern and worksheet. **Please note: Digital kits can be emailed worldwide.**

Inspired by a 1920s “Poppies” quilt, this 3-hour workshop is perfect for beginners or seasoned stitchers. Using minimal supplies, learn needleturn appliqué using bold red and green fabrics to create a 12" block. Big, easy-to-handle shapes make it stress-free and satisfying. You can choose to set the Poppy vertically or diagonally in the block. You will leave with the skills and confidence to finish the block at your own pace. All Stitching Done by Hand.



All Levels

Students to Provide

BEFORE CLASS:

- Cut 13" square out of background fabric. (Finished block will be 12 ½")
- Cut: Cut a bias strip 16" x 3/4" for the stems.

SUPPLY LIST

Fabric:

This is a good time to use your stash. Choose 100% cotton red and green fabric in a variety of light and dark tones. For example, the leaves are sewn using one light and one dark green fabric. The poppy calls for shades of red and a little bit of purple or very deep red. Background should be a light color (white shows off the applique).

Thread:

100% cotton 50 wt. thread to match your appliques, not your background fabric. If you cannot find the color in cotton you can also use polyester covered cotton. Aurifil has a 100% cotton 80 wt. thread that works well also.

Needles:

A long slim needle works best for needleturn. Size 10 to 12 Sharps or Milliner needles are my favorite.

QuiltFest Virtual Summer Schoolhouse Workshop Catalog

CONTINUED: SS-004 – Vintage Poppy Made New

Other Supplies:

- Freezer paper,
- small paper scissors,
- fabric marker/pencil for tracing pattern and marking fabric,
- embroidery scissors for fabric,
- 1/2" or 3/4" applique pins,
- toothpick,
- iron and ironing board standing by,
- thimble if you use one,
- light box (optional),
- and any other sewing supplies that make you happy!

QuiltFest Virtual Summer Schoolhouse Workshop Catalog

CONTINUED: SS-005 – Favorite Things: An Introduction to Broderie Perse

THREAD

- Cotton or cotton covered polyester to blend with your motifs and/or background. Size 50 or 60 is good. Aurifil has a size 80 especially for applique.

OTHER SUPPLIES

- applique pins,
- washable fabric glue stick (Elmer's) or glue (like Roxanne),
- toothpick,
- fabric marker,
- small fabric scissors,
- thimble (if you use one),
- small ruler,
- a light box (optional)
- and any other supplies that will make you happy.

QuiltFest Virtual Summer Schoolhouse Workshop Catalog

BETH CUNNINGHAM

SS-006 – Color, Pattern, and Sparkle: Beading on Fabric

3-Hour Workshop - \$90

10 am - 1 pm EDT, Thursday, June 25

Explore the creative possibilities of adding beadwork to fabric in this engaging online workshop inspired by bold color and dynamic patterns. You'll learn a variety of techniques for attaching seed and bugle beads, including single and stacked beads, flowing lines, and textured groupings, as well as backstitch, couching, and more. Over the course of the 3-hour session, you'll create a beaded sampler that showcases each technique and serves as a practical reference for incorporating bead embellishment into quilts, garments, and other textile projects.



Confident Beginner Level

Students to Provide

- Quilt Fabric: Kaffe Fassett's "Millefiore" in a light color, size: fat square.
- Quilt batting: thin, fat square.
- Quilt backing: fat square.
- Safety pins or basting thread.
- (Prepare a quilt sandwich, either basted or safety pinned together.)
- Cotton/Polyester sewing thread, 80 wt. (stronger than just cotton thread matched to the background fabric. I use Quilter's Select thread available online from SewingMachinesPlus.com.)
- Needles (2), size 10 Milliners/straw, thread them and have them ready for class.
- Bead mat or washcloth to prevent beads from rolling away.
- Selection of seed beads and bugle beads, available from FireMountainGems.com, search for seed beads and bugle beads, glass, size #11 to #8 (#11 is a smaller bead than #8). In the lower left corner of the bead ad is written "other package sizes here." Tap and look for the smallest size package.
- Flower and leaf-shaped beads. I love adding these, and they are optional.
- This is a varied list of supplies, and I encourage you to shop your own stash, and local small businesses.
- Needler threader and thimble, if you use it.
- Portable light, optional.

QuiltFest Virtual Summer Schoolhouse Workshop Catalog

CONTINUED: SS-006 – Color, Pattern, and Sparkle: Beading on Fabric

- Sharp embroidery scissors.
- Marking pen or pencil.
- Hoop, 8-10", optional.

QuiltFest Virtual Summer Schoolhouse Workshop Catalog

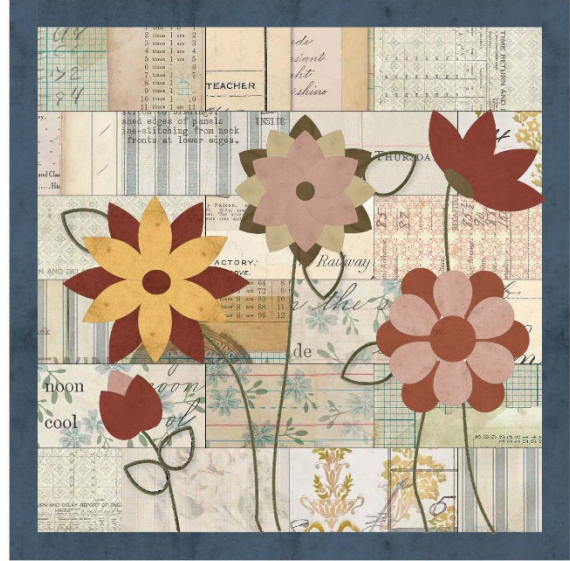
PENNI DOMIKIS

SS-007 – Urban Garden

3-Hour Workshop - \$55

10 am - 1 pm EDT, Wednesday, June 24

Create a scrappy background and make your own garden using a variety of shaped templates or simple scissors or a rotary cutter. Let your creativity grow with simple techniques to create a beautiful art wall hanging or keep building your blocks into a one-of-a-kind textured quilt. Skills demonstrated: General background piecing, easy machine appliqué, simple couching, available products, and improvisational design.



All Levels

An **OPTIONAL Class Kit** is available, #SS-007Kit - \$16, [Click Here](#) to purchase. The kit includes Teardrop Keychain Acrylic Template, Petal Keychain Acrylic Template, Chenille-It and textured options for stems, leaves, and graffiti.

Please note: Kits can only be mailed within the continental United States.

Students to Provide

- Background Fabric: Mixed pieces or scraps to create an 18" block.
- Miscellaneous scraps for garden pieces.
- FQ of border fabric
- Chenille-It, bias tape, or Yarn for stems and leaves, and option graffiti.
- Sewing Thread
- Optional Color Match Thread for stitching pieces
- Terial Magic Spray or Steam a Seam II for appliqué

Sewing Machine Required

QuiltFest Virtual Summer Schoolhouse Workshop Catalog

PENNI DOMIKIS

SS-008 – Pickle Dish and Friends

6-Hour Workshop - \$90

10 am - 4 pm EDT, Friday, June 26

Learn Beginner Foundation Piecing and Beginner Curved piecing as we create this beautiful block from days gone by. Additional foundation piecing options are available for those who want a challenging block. Make all the same block or choose from 3 options to create your quilt. You will make one block complete in class guaranteed. Skills

Demonstrated: Cutting curves, cutting on grain, beginner foundation piecing, beginner curved piecing, tips for pinning and/or gluing blocks in place.

All Levels

An OPTIONAL Class Kit is available; see workshop #SS-008Kit - \$30, [Click Here](#) to purchase. The kit includes Nested Petal Acrylic Template, Nested Petal Curve Acrylic template, Folding Friend.

Please note: Kits can only be mailed within the continental United States.

Students to Provide

- 2-3 FQs of coordinating fabrics for blocks (think pattern mixing)
- Downloaded Pattern for foundation piecing - 2 copies of each block pattern
- Piecing Thread
- Glue stick
- Sewing pins
- Optional- Add-A-Quarter Ruler

Sewing Machine Required



QuiltFest Virtual Summer Schoolhouse Workshop Catalog

MICHAEL EASON

SS-009 – Einstein Tiles & English Paper Piecing (EPP) - A Slow-Stitching Step-by-Step Class

3-Hour Workshop - \$90

10 am - 1 pm EDT, Friday, June 26

Class Philosophy: English Paper Piecing is not about speed, perfection, or prior experience. It is about slowing down, working with your hands, and trusting a process that has connected makers for centuries. In this class, we will demystify

EPP by breaking it into small, repeatable steps—proving that anyone can do this. This workshop blends the history of English Paper Piecing with the contemporary curiosity of Einstein tiles, showing how traditional handwork and modern mathematics meet—allowing the student to use color and patterns to create shape and interesting designs.

All Levels

The workshop fee includes the \$25 class kit. The class kit includes instructions on how to assemble the paper pieces, 150 1-1/2 Kite Paper templates, and 1 Acrylic template.

An optional class kit is also available; see workshop #SS009Kit to purchase -\$15, [Click Here](#). The kit includes Sew Line Glue Pen, and Hand-made protective leather finger sleeve.

Kits can only be mailed within the continental United States.

Students to Provide

Supply List: Einstein Tiles

- Kite Paper Pieces – Size 1-1/2 kite
- Fabric – (A variety of print or color. This is a great way to use charm packs!)
- Fabric scissors
- Glue stick
- Needle - (I prefer a size 9 or 10 Milliners needle)
- Thread - (Wonderfil Decobob 80wt, or a brand of your choosing as long as the weight is higher)
- Thimble
- Ability to take a photo

Optional Items:

- Sewtites Magnets or clips to hold pieces together while sewing



QuiltFest Virtual Summer Schoolhouse Workshop Catalog

MICHAEL EASON

SS-010 – Improv English Paper Piecing

3-Hour Workshop - \$65

10 am - 1 pm EDT, Saturday, June 27

Discover the freedom of improv design through English Paper Piecing! In this workshop, you'll learn how to transform a simple sheet of 8.5" x 11" card stock into your own original pattern - sketching, cutting, and preparing paper pieces with accuracy and ease. Along the way, we'll cover essential skills like adding seam allowances, labelling pieces for correct fabric placement, and aligning shapes as you sew.



You'll also explore both glue and thread basting methods, giving you the flexibility to find what works best for your style. Finally, we'll dive into creative approaches for scaling your design and using fabric choices to add depth, movement, and personality to your work. By the end of the class, you'll walk away with the confidence and tools to design unique improv EPP projects - merging traditional techniques with modern artistry to create something that's entirely your own.

All Levels

Students to Provide

- 8.5x11 inch card stock or marker paper (Paper should be thicker than printer paper)
- Fabric – (A variety of print or color. Large scraps are perfect!)
- Pencil
- Ruler - (I use a 3x18 but smaller works as well)
- Paper scissors
- Fabric scissors
- Glue stick
- Needle - (I prefer a size 9 or 10 Milliners needle)
- Thread - (Wonderfil Decobob 80wt, or a brand of your choosing if the weight is higher)
- Thimble
- Ability to take a photo

Optional Items:

- Sewtites Magnets or clips to hold pieces together while sewing - Can purchase using my affiliate code MICHAELEASON for 10% off at check out.

QuiltFest Virtual Summer Schoolhouse Workshop Catalog

JULIA GRAVES

SS-011 – Amazing Abstracts

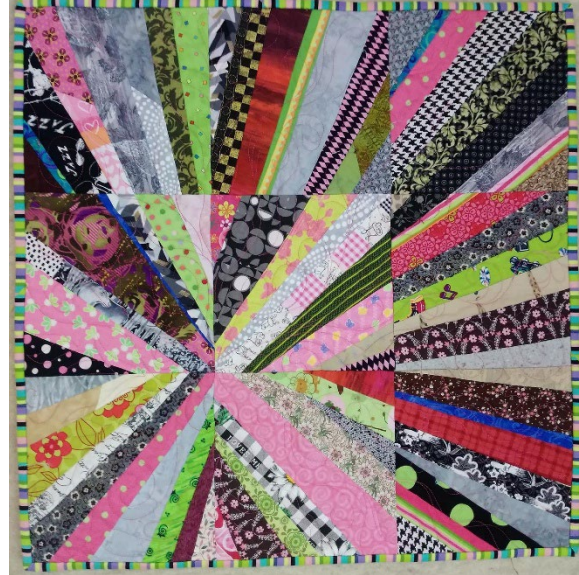
6-Hour Workshop - \$100

10 am - 4 pm EDT, Wednesday, June 24

The workshop fee includes the \$5 class kit.

The Class Kit includes the emailed digital workshop handouts. **Please note: Digital kits can be emailed worldwide.**

Create an abstract quilt that has amazing movement and drama. Go from inspiration to a simple sketch, then have fun “coloring” your sketch with bits of fabric to create a mock-up of your design – see before you sew! The design is gridded and blocks are foundation pieced using an easy sew and flip method with room for creativity and improvisation. Learn how to use color and value to create the drama and desired effects.



All Levels

Students to Provide

- Pencil, eraser, fine tip Sharpie, dry erase marker (optional)
- Scissors for paper and fabric
- Paper to write on and draw on (with lines and without – just a few pieces)
- Sturdy paper to glue on (large index cards – 4x6 or 5x7 or card stock – just a few pieces)
- Double-sided tape or glue-stick to use with the sturdy paper to create your mock-up. Tape is preferred as glue stick sometimes dries before the design is finished. An easier but more expensive option is Grafix doubletack mounting film.
- Long thin ruler for drawing lines with Sharpie
- Square rotary cutter ruler – 6 ½” square or larger; 8” square or larger gives more flexibility for block sizes
- Rotary cutter with new blade, mat
- Pictures for inspiration – color schemes, design ideas, etc.
- Clear plastic - at least one piece, such as plastic document protector sleeves (8 ½” x 11”), template plastic, or large clear Ziploc bags (you will draw a grid over your design onto this clear plastic)
- Sewing machine and supplies (machine, power cord, foot pedal, needles, feet, bobbins, neutral thread (gray or beige), extension cord)
- Freezer paper or parchment paper, at least 12” by 12” (optional - to cover any sticky spots on your mockup)

QuiltFest Virtual Summer Schoolhouse Workshop Catalog

CONTINUED: SS-011 – Amazing Abstracts

- Tweezers (optional – for placing small bits of fabric on the design)
- Portable light (optional)
- Iron, pad
- Color wheel (optional)

Fabric Supplies:

- ½ yard foundation fabric (muslin, or white/cream fabric without pattern, as sometimes the foundation shadows through light colored fabric). This is enough for a small wall hanging or pillow.
- Fabrics in at least 2-3 colors for your chosen color scheme in a full range of value (light, medium, and dark) and intensity (pure/clear colors and muted/grayed/toned colors), plus lots of neutrals (white, cream, beige, brown, gray, black & white, and black). Variety is better than yardage. Long, narrow scraps work well (1-3” wide and 6”-12” long, but don’t trim if you have larger pieces). Think mostly tone-on-tone blenders vs multiple-colored fabrics, though fabrics that have just the colors of your color scheme can also work well.
- Extra fabrics – if you have room, throw in small pieces of fabric in a wide variety of values and colors, so you have more choices
- Avant-garde fabrics – the foundation piecing method lends itself to using fabrics that are not traditional quilting cotton, such as silks, drapery fabric, polyesters, etc. So – if you want to be adventurous, have at it! A woven fabric is easier to sew with than a non-woven fabric, such as knits. Use a ½” seam allowance vs the traditional ¼”.
- If using an inspiration photo, look closely at all the colors in the photo and bring fabrics in all the colors. The color effect of a photo is often driven by the colors that hide in the background as much as by the bright colors that pop.

Sewing Machine Required

QuiltFest Virtual Summer Schoolhouse Workshop Catalog

JULIA GRAVES

SS-012 – Scrappy Jelly Roll Race Remix

3-Hour Workshop - \$60

10 am - 1 pm EDT, Thursday, June 25

The workshop fee includes the \$5 class kit.

The Class Kit includes the emailed digital workshop handouts. **Please note: Digital kits can be emailed worldwide.**

Are you ready to reimagine, remix, and refresh? Discover a whole new way to play with strips of fabric in this fun, experimental quilting approach. **Scrappy Jelly Roll Race Remix** takes the typical Jelly Roll Race quilting method and infuses it with creativity, spontaneity, and scrappy charm. Use a Jelly Roll or your stash/scrap to create a quick and fun quilt. The pattern includes many variations and information on how to design your own.

All Levels

Students to Provide

Supplies:

- Sewing Machine with regular feet, plus a quarter-inch foot if you have one.
- Rotary cutter and mat
- Long or large square ruler
- Thread—neutral color such as beige or grey.
- Basic sewing supplies—straight pins, seam ripper, thread snips, etc.
- Optional - small iron and ironing pad

Fabric:

- **40 WOF Strips** – will make a sofa throw-size quilt (50" x 64"). This is a Jelly Roll, or you can make your own Jelly Roll by cutting 2 1/2" strips from stash yardage, or use your FQs or scraps! Lay your smaller 2 1/2" wide strips end to end and measure out at least 1700".
- **Optional Accent Fabric** – You may want to include small bits of accent fabric separating your strips like in the sample. Make sure these bits contrast with the rest of the fabric. In the example, I used small pieces of blue fabric to contrast with the warm strips. You will need the number of strips listed if using 2 1/2" squares. You can go smaller, but each piece should be at least 1 1/2" x 2 1/2". You will need a total of 120" in length if going scrappy. If you use one fabric, you will need three 2 1/2" WOF strips or 1/4 yd.

Sewing Machine Required



QuiltFest Virtual Summer Schoolhouse Workshop Catalog

LISA HOFMANN- MAURER

SS-013 – Whirlpool

3-Hour Workshop - \$65

12 pm - 3 pm EDT, Wednesday,
June 24

In this 3-hour workshop, we'll explore improv curves by piecing an improv curved log cabin. Have you always wanted to sew an improvised curve, but haven't found the courage yet? Have you

tried it before, but your fabric just wouldn't lie flat? In this workshop, students will learn Lisa's techniques and will afterwards approach those curves with confidence.



We also address the question: How do I choose colors and fabrics for an impressive quilt? How do I choose a color scheme that is pleasing to the eye? What is value of colors and how does it help me make a convincing choice of color and fabric?

We will aim to make a smaller project or the beginning of a larger piece. It's going to be a lot of fun! For this class, you need to be able to cut with a rotary cutter and sew a 1/4-inch seam. The class will help you get confident with those curves and will add a great new technique to your improv toolbox.

All Levels

Students to Provide

Fabric requirements for the Whirlpool Workshop: It's very difficult to give exact fabric amounts and measurements when working on an improv piece. A good selection of different fabrics is very helpful; you might want to use a mix of prints and solids. You can use scraps or fat quarters from your stash in coordinating colors for accents and contrast. We will only use a small amount of fabric in the class and the final amount needed will depend on the quilt top you want to make. Please bring as much as possible of larger quilting cotton fabric scraps (at least 10 x 6 inches) in many colors. In this course we will not complete a project, feel free to bring "exercise materials" if you just want to learn the technique.

QuiltFest Virtual Summer Schoolhouse Workshop Catalog

CONTINUED: SS-013 – Whirlpool

Equipment requirements for the Whirlpool Workshop:

- Sewing Machine
- ¼ inch sewing foot
- Good quality thread in an appropriate weight for piecing
- Chalk marker
- Water Soluble Pen for Fabric
- Large Rotary Cutter - with a new blade
- Small Rotary cutter, for example OLFA 18mm RTY-4
- Very sharp embroidery scissors
- Spray starch or another ironing aid
- Ironing Clapper
- Ironing station
- Empty Waterbrush Pen medium size
- Fabric Pins
- Cutting Mat
- Small Patchwork Ruler, for example Omnigrid-Marking-Trio-Ruler-Set
- Fabric Scissors
- Paper Scissors
- Thread cutter
- A positive mindset towards improv and letting go of perfection ;o)

Sewing Machine Required

QuiltFest Virtual Summer Schoolhouse Workshop Catalog

LISA HOFMANN- MAURER

SS-014 – Inset Circles & Oval Shapes

3-Hour Workshop - \$65

12 pm - 3 pm EDT, Thursday,
June 25

In this 3-hour workshop, students will learn how to sew inset circles and oval shapes with their sewing machine! All shapes are sewn in and not

appliquéd, everything is sewn by machine, no hand sewing. Lisa Hofmann-Maurer will show you different ways to use her technique by overlapping shapes or setting a circular shape into another. Students will learn how to inset any round shape and are able to use this skill in their future quilt designs. With the knowledge from this class, you will be able to sew almost any shape in a quilt design without fear.

All Levels

Students to Provide

Fabric requirements for the Inset Circle & Oval Shapes Workshop: It's very difficult to give exact fabric amounts and measurements when everyone comes up with their own design. A good selection of different fabrics is very helpful; you might want to use a mix of prints and solids. You can use scraps or fat quarters from your stash in coordinating colors for accents and contrast. We will only use a small amount of fabric in the class, and the final amount needed will depend on the quilt top you want to make. The background fabric is the biggest piece you'll need and should measure at least 20 x 20 inches. As we'll work on two different designs, please bring two pieces of background quilting cotton fabric. Please also bring at least 10 pieces of larger quilting cotton fabric scraps (at least 8 x 8 inches) and smaller quilting cotton fabric scraps in many colors (at least 5 x 5 inches). In this course, we will not complete a project. If you want to, you can complete your project later at home by practicing what you have learned in class.

Equipment requirements for the Inset Circles & Oval Shapes Workshop:

- Sewing Machine
- ¼ inch sewing foot
- Good quality Thread in an appropriate weight for piecing
- Chalk marker



QuiltFest Virtual Summer Schoolhouse Workshop Catalog

CONTINUED: SS-014 – Inset Circles & Oval Shapes

- Water Soluble Pen for Fabric
- Large Rotary Cutter - with a new blade
- Small Rotary cutter, for example OLFA 18mm RTY-4
- Very sharp embroidery scissors
- Spray starch or another ironing aid
- Ironing Clapper
- Empty Waterbrush Pen medium size
- Freezer Paper
- Washable liquid glue, for example Roxanne Glue with applicator tip
- Heat-resistant gloves
- Two sheets of baking paper
- A pair of compasses
- Fabric Pins
- Cutting Mat
- Small Patchwork Ruler, for example Omnigrid Marking Trio Ruler Set
- Fabric Scissors
- Paper Scissors
- Pencil
- Thread cutter
- A positive mindset towards improv and letting go of perfection ;o)

Sewing Machine Required

QuiltFest Virtual Summer Schoolhouse Workshop Catalog

LEO RANSOM

SS-015 – 2 Fabric Portraiture

3-Hour Workshop - \$75

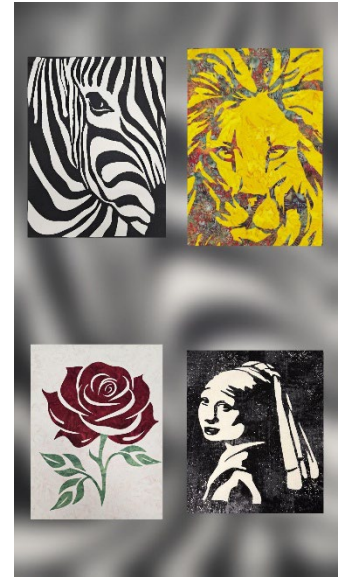
12 pm - 3 pm EDT, Wednesday, June 24

Instructor will walk students through the process of creating a piece of art using only 2 fabrics. Also, we will discuss the best photos to create a piece of art and talk a little bit about how to create the pattern for a piece.

All Levels

Students to Provide

- 2 Fat Quarters (1 light and 1 dark)
- 1/3 yard of Heat N Bond Lite, Wonder Under or double-sided fusible of your choice (No Steam A Seam Lite 2)
- Small Pointed Tip Scissors (I use Kai 51 00 series with a curved tip)
- Fine Point Sharpie or Ink pen
- Straight Pins
- Small Foam Core Board (that will accommodate an 11"x 14" project)
- Pattern (Supplied by the Instructor) - will be emailed to students



QuiltFest Virtual Summer Schoolhouse Workshop Catalog

LEO RANSOM

SS-016 –Layered Fabric Portraiture

6-Hour Workshop - \$115

10 am - 4 pm EDT, Friday, June 26

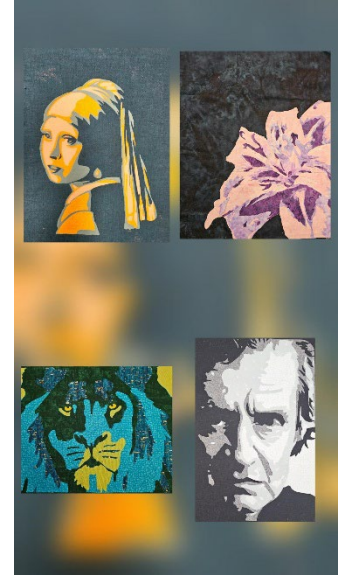
We will create a work of art using a cut-away process, layering each fabric on top of the previous piece of fabric to expose all of the fabrics underneath each layer.

We will discuss the best photos for the students' projects and a little bit on how to create a pattern.

All Levels

Students to Provide

- 5-7 gradated fabrics from light to dark (Fat Quarters will work)
- 1 1/2 yards of Heat N Bond Lite, Wonder Under, or double-sided fusible of your choice (No Steam A Seam Lite 2)
- Small Pointed Tip Scissors (I use Kai 51 00 series with a curved tip)
- Fine Point Sharpie or Ink pen
- Straight Pins
- Small Foam Core Board (that will accommodate an 11"x 14" project)
- Pattern (Supplied by the Instructor) - will be emailed to students



QuiltFest Virtual Summer Schoolhouse Workshop Catalog

CATHERINE REDFORD

SS-017 – Walking Foot Quilting - Beyond the Basics

6-Hour Workshop - \$80

12 pm - 6 pm EDT, Friday, June 26

The workshop fee includes emailed basic digital class handouts. **Please note: Digital kits can be emailed worldwide.**

An OPTIONAL Class Kit is available, see workshop #SS-017Kit to purchase, \$30 - [Click Here](#): Signed copy of *Modern Machine*

Quilting, 2nd Edition (recommended but not required). **Please note: Physical kits can only be mailed within the continental United States.**



A comprehensive class in walking foot quilting. Finish your quilts on a domestic machine while enjoying all the control of your walking foot. Make stitched samples of different styles, including matchstick quilting, grids, combined stitches, and serpentine. Elevate your technique with beautiful organic curves and learn how to execute sharp turns. Make accurate straight line polygon spirals and round out the class with super spirals. Along the way, we will discuss using colored threads and adding hand stitching for maximum impact. Finish the class ready to turn your tops into quilts. You will soon be planning your quilting before you even start piecing!

All Levels

Students to Provide

Materials: More if you know you are a speedy stitcher!!

- 10, 10" squares solid color fabric
- 2, 10" square pieced blocks of any design (or 2 more solid squares)
- 6, 10" squares low-loft cotton batting

Equipment:

- 50, 1" safety pins
- Scissors
- low-tac painters' tape
- chalk pencil
- ruler

QuiltFest Virtual Summer Schoolhouse Workshop Catalog

CONTINUED: SS-017 – Walking Foot Quilting - Beyond the Basics

- protractor
- paper and pen for notes
- Sewing machine required with a Walking Foot, or a Dual feed System, and an open open-toed appliqué foot
- Your favorite quilting thread and sharp machine needles

Optional:

- Kwik Klip
- Ballpoint stiletto

Sewing Machine with Walking Foot Required

QuiltFest Virtual Summer Schoolhouse Workshop Catalog

CATHERINE REDFORD

SS-018 – Beading on Fabric for Quilters

3-Hour Workshop - \$50

12 pm - 3 pm EDT, Saturday, June 27

The workshop fee includes emailed digital instructions for a mini quilt. **Please note: Digital kits can be emailed worldwide.**

Add some sparkle and dimension to your quilts with beads! Learn how to attach beads so they won't fall off and so much more! We will work on your own small pre-made postcard-sized quilts and try seed stitch, beaded back stitch, couching, stacks and fringes. We'll learn the best ways to sew bugle beads and finish with elegant edge techniques including moss stitch, picots, wrapping and artful arches.

All Levels

Students to Provide

- Small postcard-size quilt (instructions will be sent before class)
- Tube size 8 seed beads
- Tube bugle beads
- (Sequins and novelty beads are also welcome!)
- Size 9 sharp hand sewing needles
- Beading thread, e.g. silamide size D
- Small scissors



QuiltFest Virtual Summer Schoolhouse Workshop Catalog

CRIS ROACH

SS-019 – Stitching Foundations: Beginner's Free Motion Quilting

6-Hour Workshop - \$115

12 pm - 6 pm EDT, Wednesday, June 24

This hands-on class is designed for quilters new to free-motion quilting or those seeking to build confidence in their skills. Participants will learn the fundamentals of free-motion quilting, including machine setup, essential techniques, and basic designs, all in a supportive and encouraging environment.

Class Highlights:

Machine Setup: Learn how to prepare your sewing machine for free-motion quilting, including lowering the feed dogs and attaching the darning foot.

Essential Techniques: Master the basics of free-motion quilting, such as controlling stitch length, maintaining consistent speed, and moving the quilt smoothly under the needle.

Basic Designs: Practice simple quilting patterns like straight lines, loops, stipples, and meandering to build muscle memory and confidence.

Troubleshooting Tips: Receive guidance on common challenges like thread tension issues, stitch irregularities, and fabric puckering.

[Click here](#) to download Cris' workshop description and materials list.

All Levels

The workshop fee includes the \$25 class kit. The Class Kit includes a Custom FMQ Panel, handouts, and sheet protector.

An OPTIONAL Class Kit is also available, see workshop #SS-019Kit to purchase, \$30 - [Click Here](#). The optional kit includes the Trace, Draw, & Quilt: Free Motion Quilting Book by Cris Roach. This workbook is to be used to Trace the designs with a dry erase marker, Draw the designs, and Quilt on your practice quilt sandwich. Muscle memory has been proven as a wonderful technique to learn and improve Free Motion Quilting.

Please note: Kits can only be mailed within the continental United States.

Students to Provide

- One Quilt Sandwich
- 18"x18" Light Solid or Light Tone-on-Tone print for Top Fabric
- 19"x19" Lightweight Batting; Spray Basted or Fused, NO PINS!



QuiltFest Virtual Summer Schoolhouse Workshop Catalog

CONTINUED: SS-019 – Stitching Foundations: Beginner's Free Motion Quilting

-20"x20" Backing Fabric

-One Quilt Sandwich-we will add the Custom Panel in Class

-19" x 19" Lightweight Batting

-20" x 20" Backing Fabric

-Sewing Machine: foot pedal, power cord, extension table, ability to drop feed dogs for free motion quilting, and free motion quilting foot.

-Quilting Needle-90/14

-Basic Sewing Supplies: scissors, full bobbin, and top thread (light grey)

-Dry Erase Marker

-Water Soluble Marker

-Quilting Gloves

Sewing Machine Required

QuiltFest Virtual Summer Schoolhouse Workshop Catalog

CRIS ROACH

SS-020 – Stripology Nova GE Designs Quilt

6-Hour Workshop - \$115

12 pm - 6 pm EDT, Saturday, June 27

This quilt uses assorted 10" squares of light and dark fabrics as well as innovative piecing and cutting with the Creative Grids Stripology Squared or XL ruler by GE Designs. Instructions for using regular rulers are included. The pattern comes with 5 different size options: crib, lap, twin/full, queen, king. Learn how to make this dynamic quilt where stars magically appear.

Learn how to accurately and fast make this Star design the GEasy way. Lap size supplies listed. [Click here](#) to download Cris' workshop description and materials list.

All Levels

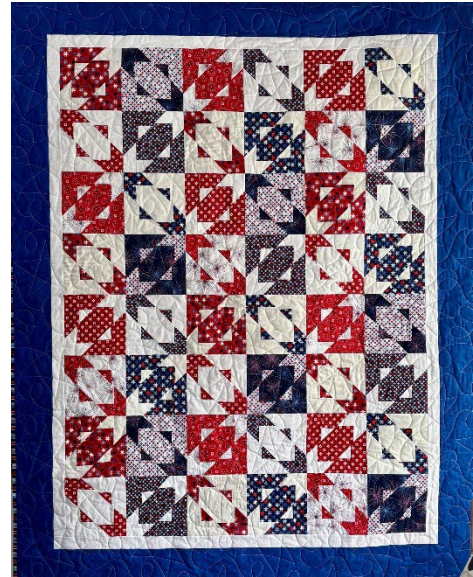
The workshop fee includes the \$25 class kit. The Class Kit includes GE Designs Nova Pattern, GE Designs Ruler Stickers-Designed to make your quilting faster, more accurate, and stress-free, these vibrant stickers help you quickly locate and align measurements on your rulers, templates, and cutting mats.

An OPTIONAL Class Kit is also available, see workshop #SS020Kit to purchase, \$10 - [Click Here](#). The optional kit includes GE Organizing Stickers - These clever stickers make it simple to label, sort, and track your fabric pieces, blocks, and quilt sections as you work. Whether you're cutting, piecing, or assembling your quilt top, GEasy stickers help you stay on track so every project comes together with ease and confidence.

Please note: Kits can only be mailed within the continental United States.

Students to Provide

- Sewing machine with 1/4" piecing foot
- Basic sewing supplies for machine piecing
- Rotary Cutter
- Rotary Cutting mat to fit the size of Stripology Ruler (18" x 24")
- Stripology XL or Squared Ruler
- Note: Instructions will be given for using regular quilting rulers
- 10" Squares:
 - 24-Light fabrics or 1-3/4 yard of single background fabric
 - 24-Dark/Contrast fabrics



QuiltFest Virtual Summer Schoolhouse Workshop Catalog

CONTINUED: SS-020 – Stripology Nova GE Designs Quilt

-Narrow Border Fabric-1-yard

-Wide Border Fabric-1- $\frac{1}{4}$ yard

-Binding Fabric- $\frac{1}{2}$ yard

Sewing Machine Required

QuiltFest Virtual Summer Schoolhouse Workshop Catalog

LINDA SCHMIDT

SS-021– Sea Cypress

6-Hour Workshop - \$85

12 pm - 6 pm EDT, Thursday, June 25

This class is a great class to begin to be an art quilter! You will experience a wide variety of construction and embellishment techniques including fabric painting, string piecing, invisible machine appliqué, soft edge appliqué by machine and by hand, free motion machine

embroidery, and use Solvy to make trees and thread appliqués and fabric. You will also learn how to create the illusion of depth and how to work from a photograph to create your own landscape masterpieces while creating a small piece of art. Come play with me, and see my website for more pictures – www.ShortAttentionSpanQuilting.com

All Levels

Students to Provide

An 10" x 14" piece of PDF (Prepared for Dyeing) fabric OR a piece of finely woven white cotton fabric (like a sheet) that has been washed and dried a couple of times so a drop of water flicked at it is absorbed instead of beading up on it.

- Fabric paint (blue, pink, lavender, green etc.) to paint a sky and sea. I use Pebeo Setacolors and/or Jacquard fabric paints (available from Dharma Trading or Amazon) or Golden fluid acrylics (from Michael's or Hobby Lobby); use whatever fabric paint you have as long as you can dilute it with water. DO get some perlescent white if at all possible to give your sky an underlying shimmer (From Setacolor of Jacquard).
- White plastic garbage bag for painting on
- ½" wide paintbrush
- Small palette or empty plastic egg carton
- One plastic page protector or fairly stiff, smooth plastic to paint on
- Apron
- Landscape Fabric - Small pieces of tie-dyed or hand dyed and/or batik fabrics for distant to close-up mountains, grassy hills and some foliage, preferably blurry batiks and small printed flowers. Be sure you have a good range from very light to very dark. See the samples on the miniatures page of my website: www.ShortAttentionSpanQuilting.com



QuiltFest Virtual Summer Schoolhouse Workshop Catalog

CONTINUED: SS-021 – Sea Cypress

- One piece sheer white or transparent fabric or lace to make incoming wave
- One package of Solvy – can be regular Solvy, NOT Ultra Solvy
- One piece Totally Stable – available at Amazon and sewing machine stores (this underlays your design and is very important for you to know about – it's GREAT for any kind of landscape. You deserve it.)
- Glue Stick
- Scotch Tape
- 1 piece 8-1/2" x 11" tracing paper (the kind you see through to trace)
- 1 piece 8-1/2" x 11" freezer paper
- Embroidery hoop about 6-8" in diameter or so that will fit under your darning foot
- Ultra Fine Sharpie marker
- Thread – green polyester or metallic to sew cypress leaves, dark brown for trunk.
- "Wonder" invisible thread (.004 diameter)
- Neutral regular thread for bobbin
- Sewing machine, cord, foot pedal and feet, including regular, open toe & darning foot for your machine, as well as an extra bobbin case to be set for heavy threads and extra bobbins.
- Scissors for paper and fabric
- Small rotary cutter, board and ruler
- Pins, seam ripper, stiletto or long tweezers
- Matches, a tall (taper) candle and candle holder
- Small flat pan that will hold water (pie tin?)
- Iron & ironing surface (optional)
- Spray starch or sizing

Sewing Machine Required

QuiltFest Virtual Summer Schoolhouse Workshop Catalog

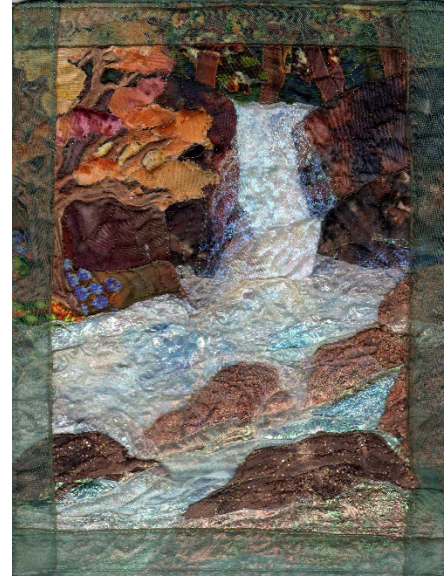
LINDA SCHMIDT

SS-022 – Fantasy Falls

6-Hour Workshop - \$115

12 pm - 6 pm EDT, Friday, June 26

The workshop fee includes the \$30 class kit. The Class Kit includes full instructions and pattern, Puff Painted tree and rocks, Tyvek, iridescent cracked ice, Mistyfuse, Lutradur, Totally Stable, Angelina fiber, cellophane, and sheer fabrics for flowing water. **Please note: Kits can only be mailed within the continental United States.**



This class teaches you some new techniques such as fabric painting, burnt-edge applique, and invisible machine appliqué, and lets you play with lots of very cool stuff to create your little landscape. Come play with MistyFuse, Lutradur, Puff Paint, Tyvek, fabric paints, iridescent cracked ice, painted melted cellophane, sheer fabrics, roving, Angelina fibers, and more. You will come away with a small, landscape art piece pinned and ready to sew, and lots of inspiration for new projects.

All Levels

Students to Provide

Fabrics for you to bring:

- 1) One small piece of dark green (forest-like) fabric – hand dyed, batik, painted, or just interesting, 10” x 4”
- 2) One small piece of printed flowers you can fussy cut wildflowers or greenery (you just need a couple of inches of this)
- 3) Small amount of rock cliff and rock fabrics, along with a ground or grassy hill fabric.
- 4) Small pieces of blue and/or white cotton fabric for water underlying sheers

Other stuff - required:

- Glue stick
- A sheet of Lite Steam a Seam II (not regular Steam a Seam II, make sure it is LITE!)
- One piece of tracing paper (the kind you see through to trace designs)
- Freezer paper – 8.5” x 11”
- Fine white iridescent glitter
- Scotch tape

QuiltFest Virtual Summer Schoolhouse Workshop Catalog

- Lots of glass-headed straight pins
- Ultra fine line permanent marker
- A few small paintbrushes, including a fan brush

CONTINUED: SS-022 – Fantasy Falls

- 5-6 small plastic or paper cups or palette
- Apron
- Parchment paper
- White plastic garbage bag
- Olfa cutter, small cutting board
- Paper & Fabric Scissors, including sharp embroidery scissors
- Embossing tool or craft heat gun (not the kind your husband uses in the garage), available at Michaels. DO NOT get the Martha Stewart one – it does not get hot enough (ask me how I know)
- Old cookie sheet – just to move wet stuff around and let it dry
- Sewing machine is optional, but desirable. If you plan to do this, make sure you have some .004 mm clear invisible thread, your open toe foot and your darning foot, with neutral thread for the bobbin.
- Optional – wood burning tool for cutting sheers

Optional Note: If you want to follow along and make a tree and rocks with me, purchase one small bottle of white Tulip Puffy paint (available at Wal-Mart or Wal-Mart.com) or other online places. It has to say “expands with heat” on the bottle. DO NOT get Tulip Puff Paint, as that is basically a 3-D paint that does not expand. Ask me how I know.

Sewing Machine Optional

QuiltFest Virtual Summer Schoolhouse Workshop Catalog

MARIA SHELL

SS-023 – Color Concepts for Quilters

3-Hour Workshop - \$65

12 pm - 3 pm EDT, Wednesday, June 24

Color and quilting go hand in hand. This workshop explores that relationship by doing a series of exercises that explore color concepts for quilters. We will learn the value of VALUE, the fickleness of color, and the nature of intensity while stitching several mini quilt compositions.

All Levels

Students to Provide

Sewing Supplies

Sewing machine with a straight stitch and a quarter-inch foot and/or the ability to create a quarter-inch seam.

Rotary Cutter with a sharp new blade

Rotary rulers—basic straight-edge ruler

Rotary Mat

Basic quilting supplies including straight pins, seam ripper, neutral thread, scissors, and snips

Paper and/or notebook and/or draft paper for making notes

Digital camera or cell phone with the ability to take pictures

Value finder and/or other color tools you may have in your home studio

Fabric: Please prepare a large selection of fabrics representing the color wheel and neutrals. Solids are best, but tonals, reads like solids, and small prints will work. This fabric should represent your stash and/or the fabric you normally work with.

All fabric should be washed, pressed, and folded so that the raw edges are enclosed. We want fabric that is pretty to look at. Ideally, the folded fabric measures approximately 5" x 12".

MORE FABRIC IS BETTER. Please be prepared to dig into your stash. We will be doing several color exercises. Some of these exercises will be done by manipulating your fabric,



QuiltFest Virtual Summer Schoolhouse Workshop Catalog

and some of the exercises will require sewing.

Sewing Machine Optional

MARIA SHELL

SS-024 – Fat Curves & Skinny Lines

3-Hour Workshop - \$65

12 pm - 3 pm EDT, Friday, June 26

In this freewheeling improv piecing workshop, we will explore the territory of BIG improvisationally pieced curves while also adding SKINNY pieced lines to and around the curves. Students can go deep and get busy with lots of piecing or go wide and create a robust and dynamic quilt with just a few dramatic shapes and lines. It all starts with a sketch that we use as the leaping off point into improv design and piecing. Satisfaction guaranteed.



All Levels

Students to Provide

- Sewing machine with a straight stitch and a quarter-inch foot and/or the ability to create a quarter-inch seam. (A quarter-inch foot with a flange will NOT work for sewing curves.)
- Olfa 60MM Straight Handle Rotary Cutter ([Click Here](#)) Is HIGHLY recommended for cutting without a ruler.
- Straight Rectangular Ruler (please bring one basic longer ruler, my favorite is the Omnigid 4" x 14" ([Click Here](#)))
- Rotary Mat
- Basic quilting supplies including straight pins, seam ripper, neutral thread, scissors, and snips
- Measuring tape
- Small sticky note pad
- Paper and/or notebook and/or draft paper for making notes, sketches, and drawings about your quilt
- Calculator or smartphone with a calculator
- Design wall (a large piece of flannel or batting works fine)
- Digital camera or cell phone with the ability to take pictures
- Stiletto or Awl
- Small bag for trash/fabric scraps
- Painters tape both 1" and 1/4" sizes

QuiltFest Virtual Summer Schoolhouse Workshop Catalog

CONTINUED: SS-024 – Fat Curves & Skinny Lines

FABRIC—PLEASE WASH ALL FABRIC BEFORE COMING TO CLASS

Please bring approximately 4 yards of fabric in an assortment of colors—solids, prints, and tonals will all work. Fat Quarters, scraps, up-cycled fabrics, and yardage are all welcome. If you bring smaller pieces of fabric, their sizes may determine the sizes of your curves and lines.

While not all of you will sew, it is good to have access to your sewing machine!